

Spring 2015

# PREFACE

Student Guide to Penn State University Park

Welcome  
Students!



- Welcome Week Schedule
- Campus Map
- Programs and Services

PENNSTATE



Office for  
Student Orientation  
& Transition Programs

PENN STATE  
LIVES HERE





YOUR SCHOOL! ... YOUR BOOKSTORE!

# THE OFFICIAL STORE OF PENN STATE STUDENTS

Visit Us Online at [psu.bncollege.com](http://psu.bncollege.com)

## Your Place for School Supplies and More...



### Official 2014 White-Out Shirt!

Available at Any  
Penn State Bookstore Location  
Beginning May 31<sup>st</sup>

# [www.psu.bncollege.com](http://www.psu.bncollege.com)

<https://twitter.com/PSUBookstore>

<https://www.facebook.com/PennStateBookstore>

**Shop  
Online  
Today for  
Textbooks!**



**New**

A fresh start  
for a new  
semester



**Used**

Save 25%  
on quality  
used books



**Rent**

Save over 50%  
Rent, learn  
& return



**Digital**

Travel lighter  
& stay  
organized



**Get Cash**

What's your  
textbook  
worth?

Yuzu and the Yuzu logo are trademarks of Barnes & Noble College Booksellers, LLC or its affiliates.

# Welcome



## President Eric Barron

Welcome to Penn State! Since 1855, the University Park campus has been home to a talented and diverse group of students, faculty, and staff, and we're pleased you're joining this vibrant community. I encourage you to make the most of your college experience. Explore a wide array of academic and cocurricular experiences. Get involved! You'll develop new skills, make new friends, and, along the way, find your future.

We look forward to getting to know you and helping you achieve your educational goals. At Penn State, we're committed to student success in the classroom and in all you do. I wish you the best as you begin your journey at our University. Thank you for choosing Penn State.

*Preface* has been designed to provide information about resources available at the Penn State University Park campus and help you prepare for your arrival. We hope you will keep *Preface* as a helpful reference guide throughout your Penn State experience. The center section, Welcome Week Schedule, is an easy-to-follow listing of student academic and welcome programs. Welcome Week schedules are also available at [www.welcomeweek.psu.edu](http://www.welcomeweek.psu.edu).

### Special Message to Parents and Families:

*Preface* has been developed to meet the needs of your student. The information in *Preface* magazine is available to you in the Parents & Families Guide. For parent and family information, please visit [www.parents.psu.edu](http://www.parents.psu.edu).

### Nondiscrimination Statement

The University is committed to equal access to programs, facilities, admission and employment for all persons. It is the policy of the University to maintain an environment free of harassment and free of discrimination against any person because of age, race, color, ancestry, national origin, religion, creed, service in the uniformed services (as defined in state and federal law), veteran status, sex, sexual orientation, marital or family status, pregnancy, pregnancy-related conditions, physical or mental disability, gender, perceived gender, gender identity, genetic information or political ideas. Discriminatory conduct and harassment, as well as sexual misconduct and relationship violence, violates the dignity of individuals, impedes the realization of the University's educational mission, and will not be tolerated. Direct all inquiries regarding the nondiscrimination policy to Dr. Kenneth Lehrman III, Vice Provost for Affirmative Action, Affirmative Action Office, The Pennsylvania State University, 328 Boucke Building, University Park, PA 16802-5901, Email: [kf12@psu.edu](mailto:kf12@psu.edu), Tel (814) 863-0471.





# PREFACE

President's Welcome	1
Change-of-Campus & Transfer Students	5

## Academic Life 7

Your Penn State Degree	8
Resources for Undergraduate Students	9
Academic Support Services	12
Business of Being a Student	14
Key Dates	16

## Campus Life 19

Involvement Opportunities & Campus Resources	20
Athletics, Recreation & Fitness	22
Housing, Food Services & Residence Life	25
Cable TV Guide	27
Off-Campus Living	28
Health & Wellness	29
Campus Safety	30
Student Rights, Responsibilities & Resources	31

## Resources 35

Getting Around	36
News & Media	37
Welcome to the State College Area	38
Important Contacts	40
Campus Map	42



**WE ARE...  
GLAD YOU ARE HERE!**

Welcome Week activities are for all students. Check out your Welcome Week Schedule in the center section.



### Student Orientation & Transition Programs

The Office for Student Orientation and Transition Programs coordinates programs and services for students enrolling at University Park for the first time with a goal of easing first-year, transfer, and change-of-campus students' transitions to the University. Programs include New Student Orientation, Welcome Week, Summer Welcome, and Winter Welcome. Current undergraduate students volunteer time during the academic year and are employed to serve throughout the summer to assist new students, parents, and family members at each stage of the transition to University Park.





# RAISE YOUR EXPECTATIONS

*complete student living*



**REAL COMMUNITY**



**BETTER LIFESTYLE**

348 Blue Course Drive

814.237.1600 | [live-thepark.com](http://live-thepark.com)





# Welcome to the Best Western Plus in State College!



- Hot Breakfast
- Indoor Pool/  
Hot Tub
- Fitness Center
- High Speed  
Internet Access  
& Wi-Fi
- Local & Long  
Distance  
Telephone Calls
- Convenient  
Shiloh Road  
Location; Near  
Nittany Mall

## BEST WESTERN PLUS University Park Inn & Suites

115 Premiere Drive  
State College, PA 16801  
814.234.8393 • 866.840.0931  
[www.nittanyhotel.com](http://www.nittanyhotel.com)



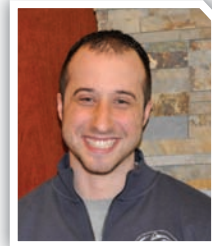
**2014 PSU Football Season  
Multi-game Discount**  
The more games you stay for,  
the more you save!

**Stay 2 games, get 10% off**  
**Stay 3 games, get 20% off**  
**Stay 4 games, get 30% off**  
**Stay 5+ games, get 40% off**

For more details, contact  
[promo@nittanyhotel.com](mailto:promo@nittanyhotel.com).



# Welcome Change-of-Campus and Transfer Students



“ I am a transfer student who came from Massachusetts. Get involved. Your college experience, no matter your age, gender, ethnic background, religion, or any other factor, will be based solely on your level of involvement. Get out there, even if it means getting out of your comfort zone, and besides, you never know what you may find out about yourself. ”

Cody H.  
Criminology  
Senior

## Welcome to University Park!

As a change-of-campus or transfer student, you no doubt bring with you college experience that will help you adjust to life at University Park. But you should expect that a new campus will present both exciting opportunities and a few challenges along the way. Whether you are living on or off campus **Preface** magazine contains important information for you to have during your transition.

You are encouraged to participate in Welcome Week activities when you arrive on campus at the beginning of the semester. Programs offered during Welcome Week are designed for students new to University Park. However, there are some events and activities just for change-of-campus and transfer students. Check out the Welcome Week schedule for information.

The Change-of-Campus and Transfer Orientation Programs offer you an opportunity to meet current University Park students and to hear about their transition experiences. You also will learn about academic advising, classroom expectations, getting involved,

navigating campus, and much more. You will receive an invitation by email with more details about the program. You are strongly encouraged to attend this program to pick up important tips for success.

Should you need more information about orientation and welcome programs for change-of-campus or transfer students, don't hesitate to contact the Office for Student Orientation and Transition Programs at 814-865-4178 or email [orientation@psu.edu](mailto:orientation@psu.edu).

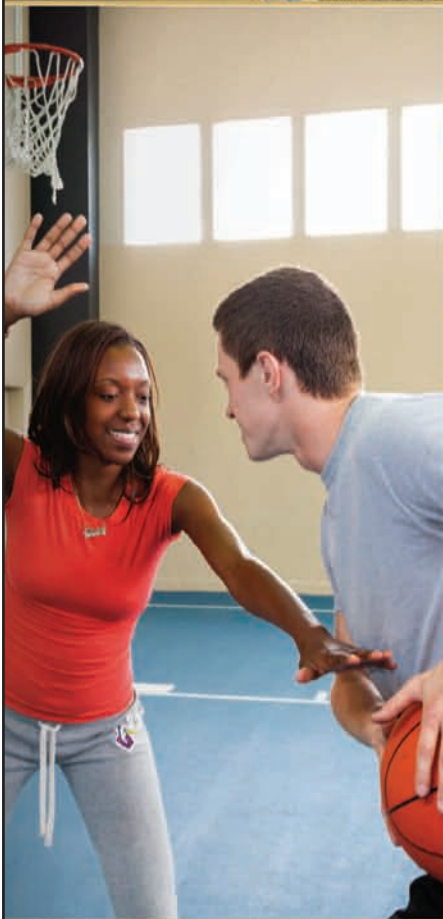
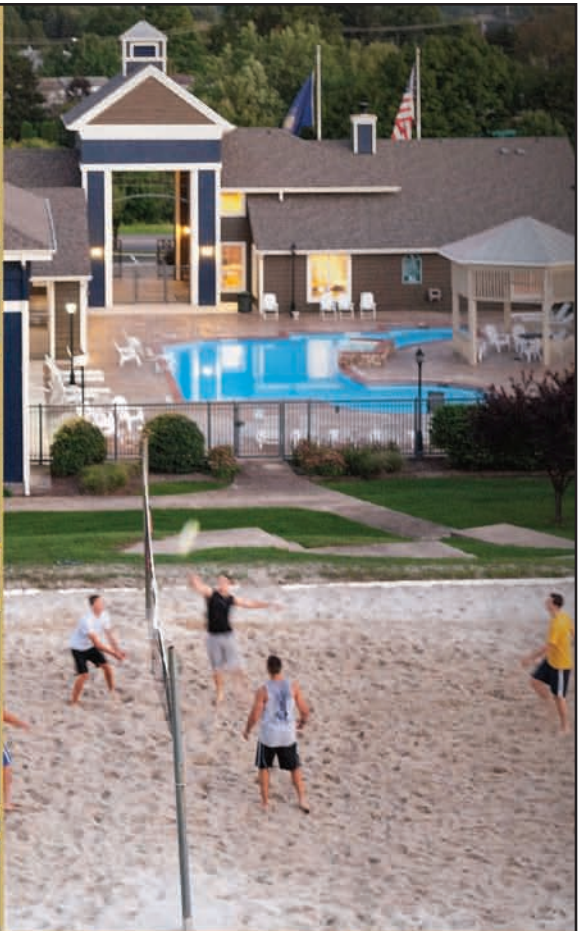


“ I spent my first two years at Penn State Altoona. A change-of-campus student needs to research all the opportunities they have at University Park that are different from their opportunities at their original campus. What organizations can you become a part of? What career/internship opportunities are available to you? What is the State College community off campus like? Dedicate your first few weeks to learning the area and trying new things. ”

Molly D.  
Senior  
International Politics  
National Security Option


We're not just an apartment...

**WE'RE A COMMUNITY!**



*It's*  
**Right**  
*Here*



E&R 

THE  
**POINTE**

The Pointe provides you with the perfect environment for your lifestyle. Whether you want to hang out with friends, relax and enjoy a quiet evening, everything you want and more is **RIGHT here**—all that's missing is you.

- Hockey Watch Parties
- Sundaes on Mondays
- Basketball Tournaments
- Monthly Dinners
- Movie Nights
- Fitness Classes

[PointeStateCollege.com](http://PointeStateCollege.com) | 814.231.6900



# Academic Life





# Your Penn State Degree



The Penn State undergraduate degree is designed to help you develop a breadth of skills as well as depth of knowledge in a content area. Breadth is structured around General Education, and depth is acquired through the major. General Education represents the foundation of a Penn State education and is designed to help you develop a breadth of skills and knowledge. Refer to your New Student Orientation Planner and/or the Undergraduate Degree Programs Bulletin for more details about your degree, General Education requirements, academic planning, academic integrity, and other important details.

## Academic Advising at Penn State [advising.psu.edu/advatpsu.htm](http://advising.psu.edu/advatpsu.htm)

As a Penn State student, you will receive academic advising from professional and/or faculty advisers. You can find your assigned adviser's contact information on eLion. After orientation, academic advising at Penn State is student initiated. You are encouraged to initiate contact with your assigned adviser at least once a semester and as often as needed to successfully plan and manage your goals. Seek a partnership with your adviser and be intentional about the educational opportunities available at Penn State.

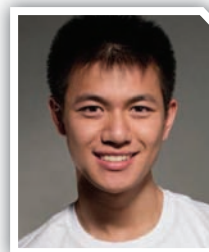
### Advisers are prepared to:

- Help you identify and achieve your academic goals
- Help you understand academic policies and procedures
- Promote intellectual discovery
- Encourage you to take advantage of both in- and out-of-class educational opportunities
- Encourage you to become a self-directed learner and decision maker

Advising @ PSU ([advising.psu.edu](http://advising.psu.edu)) provides a central source of information about academic advising and related educational topics. This site includes material developed specifically for the site as well as links to other websites with relevant academic information for you as well as faculty and staff.

### Academic Advising Centers

- Agricultural Sciences: 101 Agricultural Administration Building, 814-865-7521
- Arts and Architecture: 104 Borland Building, 814-865-9523
- Smeal College of Business: 202 Business Building, 814-863-1947
- Communications: 204 Carnegie Building, 814-865-1503
- Division of Undergraduate Studies: Grange Building lobby, 814-865-7576
- Earth and Mineral Sciences: 14 Deike Building, 814-863-2751
- Education: 228 Chambers Building, 814-865-0488
- Engineering: 208 Hammond Building, 814-863-1033
- Health and Human Development: 5 Henderson Building, 814-865-2156
- Information Sciences and Technology: 104 IST Building, 814-865-8947
- Liberal Arts: 101 Sparks Building, 814-865-2545
- Nursing: 210 Health and Human Development Building East, 814-863-2229
- Eberly College of Science: 122 Ritenour Building, 814-863-3889
- Health Professions Advising: 122 Ritenour Building, 814-863-3889
- Pre-Law Advising: Grange Building lobby, 814-865-7576



“ Meet with your academic advisers and professors as early and frequently as possible. They have a wealth of experience and information that no one else has and will really be a great asset to you as you seek recommendations for jobs and future schooling. ”

Philip C.  
Senior  
Education and  
Public Policy



# Resources for Undergraduate Students

## Undergraduate Education

[www.psu.edu/oue/current\\_students.html](http://www.psu.edu/oue/current_students.html)

The Undergraduate Education Current Students website provides a single point of reference for the complete academic information needs of undergraduates. Find easy access to program and course information, the academic calendar, schedule of courses, exam information, and much more.

## Undergraduate Degree Programs Bulletin

[bulletins.psu.edu](http://bulletins.psu.edu)

The Undergraduate Degree Programs Bulletin is a comprehensive source of academic information. It has links to University resources, admission policies, tuition, room/board, fees, and services. It also outlines course requirements for the majors offered in each college.

## Schedule of Courses

[www.schedule.psu.edu](http://www.schedule.psu.edu)

The Schedule of Courses is published before registration begins for each semester and provides the following information: courses being offered, meeting times, location, instructor if available, and the course's unique schedule number — which students must know in order to register. The Schedule of Courses is updated with the latest changes, and shows if seats are available in each class.

## ANGEL: Course Management System

[cms.psu.edu](http://cms.psu.edu)

ANGEL is Penn State's online course environment, where you will access your syllabi, course lessons, grades, class discussions, and more. Your professors also will use ANGEL to communicate with you about assignments, possible schedule changes, and other course issues. Once you activate your Penn State Access Account, you automatically have access to ANGEL.

## Division of Undergraduate Studies

[dus.psu.edu](http://dus.psu.edu)

101 Grange Building  
814-865-7576

The Division of Undergraduate Studies (DUS) enrolls and advises students who are exploring majors in multiple academic colleges. Students choosing from more than one possible major may start in DUS and, after exploring and selecting a major/college and meeting eligibility requirements, move into an academic college within their first two years.

## Media & Technology Support Services (Media Tech)

<https://www.libraries.psu.edu/psul/mtss.html>

Wagner Annex

814-865-5400

Equipment available at no cost to students. Offering cameras, iPads, laptops, video and audio equipment, and more.



“Explore classes outside of your intended major. It never hurts to learn more, and an unexpectedly interesting class can make the semester much more fun.”

Chris T.  
Senior  
Aerospace Engineering

## Penn State Reserve Officers' Training Corps (ROTC)

[www.psu.edu/oue/rotc.html](http://www.psu.edu/oue/rotc.html)

The ROTC helps develop officer candidates for service in the U.S. Army, Navy/Marine Corps, and Air Force. Qualified students may compete for ROTC scholarships and other financial support.

- Air Force ROTC – 109 Wagner Building, 814-865-5453
- Army ROTC – 212 Wagner Building, 814-863-0368
- Naval ROTC – 315 Wagner Building, 814-865-6289

## Penn State World Campus

[www.worldcampus.psu.edu](http://www.worldcampus.psu.edu)

Penn State World Campus provides students worldwide with over 100 of Penn State's most highly regarded undergraduate and graduate degrees and certificates online, anytime, anywhere.

## Research Opportunities for Undergraduates

<https://undergradresearch.psu.edu/>

Penn State offers many opportunities for undergraduate students to participate in research and creative endeavors. For tips on getting started and information on programs offered through the Office of Undergraduate Education visit the Research Opportunities for Undergraduates website.

## Technology Services

[www.its.psu.edu](http://www.its.psu.edu)

814-863-1035 or 814-863-2494

Information Technology Services (ITS) ensures that you have the technology tools necessary to help you make the most of your academic career. You have access to a wide variety of information technology services such as WebMail, IT Service Desks, and audio/video production facilities.

## Access Account

The Penn State Access Account — found at [its.psu.edu/accounts](http://its.psu.edu/accounts) — enables students to access a wide range of online Penn State and internet services. Students can request a personal web page at [work.psu.edu/webpace](http://work.psu.edu/webpace).

## Computer Labs

There are over 50 ITS computer labs at University Park available to students, faculty, and staff. Along with technology classrooms that are open between classes, we have nearly 3,000 computers in 322 rooms.

## Internet Access & Wireless Service

[wireless.psu.edu](http://wireless.psu.edu)

Students can access internet services such as the web, email, libraries, online advising, and academic records. These services are available at computer labs on campus or can be accessed on your personal computer. Wireless service is available in many campus locations.

**Software at Penn State**  
<https://software.psu.edu/>

Software at Penn State provides software to students, faculty, and staff. Through discount volume licensing and an emphasis on digital distribution, most software titles can be offered at lower prices than big box stores or online competitors. Free shipping is available on all physical orders as well as download options for most titles. Titles are added and renegotiated on a regular basis and requests from the community are always welcome.

**WebMail**

Penn State WebMail is a web-based email client that provides you with anytime, anywhere access to your Penn State email via a web browser. The easy-to-use interface lets you create and organize mailboxes, access directory services, create and add personalized signatures, and change a variety of settings.



“ Time management is essential. Studying the night before an exam is not going to get you the grade you want. Make a plan to start studying early and stick to it. ”

Laura B.  
Sophomore  
Toxicology

**University Libraries**  
**Pattee Library and Paterno Library**  
**Additional locations at University Park**  
[www.libraries.psu.edu](http://www.libraries.psu.edu)

814-865-6368

The Libraries offer you a base for a wide array of intellectual, social, and cultural endeavors through collections and services that help you navigate the world of information and assist you in your chosen fields. Librarians and staff offer superior expertise and provide help with instructional programs, online guides, course reserves, digital projects, disabilities services, equipment, more than 6 million books (including e-books), 676 databases, and more. You won't want to miss our fall open house in September!

The Knowledge Commons in Pattee Library offers:

- Multimedia production services and space
- Presentation practice rooms
- High-tech classrooms
- Group study rooms



**Get hooked on Hillel!**

**Freshmen Ice Cream Social**  
**Monday, August 25**  
**8-10pm, Berkey Creamery**

**FREE Creamery Ice Cream, meet other students, and get involved with FYSH (First Year Students of Hillel!)**



**Penn State Hillel**  
**The Foundation for Jewish Campus Life**  
[pennstatchillel.org](http://pennstatchillel.org)





START RAISING THE BAR.

START LEARNING MORE.

START BUILDING CONFIDENCE.

START TAKING CHARGE.

START SEEING THE POSSIBILITIES.

START PUSHING YOURSELF EVEN FURTHER.

START PRESSING FORWARD.

**START STRONG.<sup>SM</sup>**



**ARMY ROTC**

There's strong. Then there's Army Strong. Make Army ROTC part of your Penn State experience and be eligible for a full-tuition scholarship, fees for books and a monthly stipend to help pay for your education. When you're finished, you'll earn the rank of Second Lieutenant. There is no greater place to start toward a strong future than Army ROTC. Register for an ROTC elective today.



**ARMY STRONG.**

Add some leadership and adventure to your PSU schedule!  
Freshmen: sign up for Army 101. Take ROTC with no obligation & compete for a scholarship.

For details, contact 814-862-0368 or email [armyrotc@psu.edu](mailto:armyrotc@psu.edu)

# Academic Support Services

## Child Care Subsidy Program for Student Parents

[childcaresubsidy.psu.edu](http://childcaresubsidy.psu.edu)

James M. Elliot Building

800-746-6759

[subsidy@psu.edu](mailto:subsidy@psu.edu)

The Office of Human Resources offers a child care subsidy program for qualifying low-income undergraduate and graduate student parents enrolled in a degree program at all Penn State University locations. Students may utilize child care financial assistance at licensed and accredited child care providers.

## Multicultural Resource Center

[www.equity.psu.edu/MRC](http://www.equity.psu.edu/MRC)

220 Grange Building

814-865-1773

The Multicultural Resource Center (MRC) provides individual services for undergraduate multicultural students at University Park. MRC counselors work with students on a variety of issues involving university procedures, financial aid concerns, tutoring referrals, strategies for academic success, and assisting targets of bias motivated incidents so they might find quick resolution and attain their educational goals.

## Office for Disability Services

[www.equity.psu.edu/ods](http://www.equity.psu.edu/ods)

116 Boucke Building

814-863-1807

The Office for Disability Services (ODS) is committed to creating a welcoming and inclusive campus community for all Penn Staters. The specialized staff, in collaboration with the wider University community, facilitates equal access and equal opportunity for students with disabilities so they can fully participate in all University-sponsored programs, events, and activities. Common requests for reasonable accommodations and services may include, but are not limited to: extended time for tests, use of assistive or adaptive technology, sign language interpreting, Computer Aided Real-Time (CART) captioning, and accessible instructional materials.

Students requiring accommodations are encouraged to contact ODS as soon as possible for an intake appointment that is necessary to determine individual needs.

## Office of Veterans Programs

[www.equity.psu.edu/veterans](http://www.equity.psu.edu/veterans)

325 Boucke Building

814-863-0465

The Office of Veterans Programs at the University Park campus is organized as a comprehensive, direct service unit for veterans and Department of Veterans Affairs (DVA) benefits recipients. The staff and students provide services in three major areas: outreach, certification, and general counseling.

## Penn State Bookstore

<http://psu.bkstore.com>

HUB-Robeson Lower Level

814-863-0205

The Penn State Bookstore provides books and supplies for all courses offered at Penn State. In addition, the Bookstore has an extensive leisure book selection and all of your Penn State clothing and school spirit needs. During the HUB-Robeson Center construction, we are located in temporary space on the HUB Lawn.

## Penn State Learning

[www.pennstatelearning.psu.edu](http://www.pennstatelearning.psu.edu)

220 Boucke Building

7 Sparks Building

Pattee Library (late night math and writing)

814-865-1841

Through peer tutoring and study groups, Penn State Learning promotes disciplinary knowledge and skills, as well as habits of life-long learning. Penn State Learning offers convenient hours in several learning labs across campus, as well as late-night writing tutors in West Pattee Library.

At Penn State Learning you can:

- Drop in to see a math, writing, or foreign language tutor
- Join an existing study group or create one of your own
- Make an appointment to get feedback on the draft of a paper
- Interact with an online tutor in World Campus math, statistics, economics, and writing courses
- Reserve a study space for six with a large-screen PC and whiteboard
- Apply to tutor subjects in which you excel

## Student Support Services Program

[www.equity.psu.edu/sssp](http://www.equity.psu.edu/sssp)

312 Grange Building

814-863-9442

The Student Support Services Program (SSSP) is a federal TRIO program serving students who are from low-income backgrounds, who are first generation college students, or who have a disability. SSSP provides a broad array of services related to academic, financial, career and personal matters to help participants acclimate, thrive and succeed in the Penn State environment. SSSP also encourages participation by students with limited English proficiency, who are homeless, or who are coming out of foster care. Students must apply and be eligible to participate.

## University Office of Global Programs

[www.global.psu.edu](http://www.global.psu.edu)

410 Boucke Building

814-865-7681

The University Office of Global Programs (UOGP) provides oversight for all of Penn State's international engagements and supports U.S. and international students' transformation to becoming global citizens. UOGP offers over 200 quality education abroad programs to over 55 countries, scholarship funds, advising and immigration services for international students, and partnerships and engagement with institutions of higher education around the world.



## Don't Miss Our Great Prices!

Free Heat • Free Parking  
 High Speed Internet • Free Basic Cable  
 Furnished or Unfurnished Apts.  
 On CATA Bus Routes R, RC and RP  
 Grocery Shopping Across the Street  
 24-hour Maintenance  
 On-Site Laundry &  
 Management Office  
 Tennis and Basketball



**238-2600**  
 424 Waupelani Drive

Open Mon.-Fri. 9-5, Sat. 10-3  
[www.lionsgateapts.com](http://www.lionsgateapts.com)  
[lionsgateapts@lionsgateapts.com](mailto:lionsgateapts@lionsgateapts.com)



WELCOME  
**PSU**  
 STUDENTS!

# SAVE \$20 ON YOUR FIRST TRIP

## FULLINGTON EXPRESS BUS SERVICE

FREE Wi-Fi  
 Frequent Rider Program  
**Buy 5 rides & get 1 FREE!**

DESTINATIONS INCLUDE

NYC "Big Apple" / Dover, NJ / E. Stroudsburg  
 King of Prussia / Philadelphia  
 Monroeville / Pittsburgh  
 York / Timonium / BWI / Washington D.C.  
 Reading / Allentown / Newark, NJ  
 (All trips return on Sunday.)

Fullington Trailways Express ticket purchases,  
 fares, and schedules can be found at  
**[tickets.fullingtontours.com](http://tickets.fullingtontours.com)**

Bus Terminal is located at 152 N. Atherton St.  
 Call (814) 238-1100 for additional information.

# FULLINGTON

We Are... Your Ride.

SUBMIT THIS COUPON FOR \$20 OFF YOUR TRIP!



FULLINGTON EXPRESS  
**BUS BUCKS**

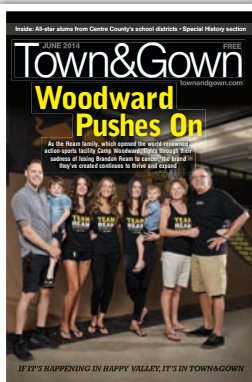
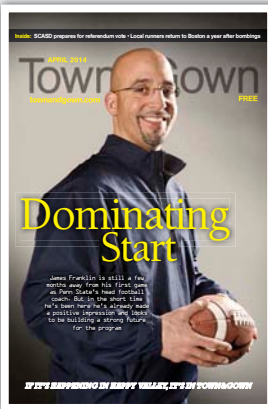


NAME: \_\_\_\_\_  
 Email: \_\_\_\_\_  
 Phone: \_\_\_\_\_

FULLINGTON  
 We Are... Your Ride.

Coupon cannot be duplicated.  
 One ticket per customer. Ticket  
 must be redeemed at the Bus  
 Terminal. Expires May 2015

[tickets.fullingtontours.com](http://tickets.fullingtontours.com) • (814) 238-1100



Follow  
**Town & Gown**  
 magazine on  
**Facebook &  
 Twitter**



# Business of Being A Student

## Office of the University Registrar

[www.registrar.psu.edu](http://www.registrar.psu.edu)

112 Shields Building

814-865-6357

[registrar@psu.edu](mailto:registrar@psu.edu)

The Office of the University Registrar has University-wide responsibility for student academic records and related processes, including: registration, academic transcripts, confidentiality of student records, grade reporting, graduation and diplomas, enrollment verification, scheduling of classrooms and final exams, and degree audits.

## Student Privacy

Penn State takes student privacy very seriously. The federal Family Educational Rights and Privacy Act of 1974 — FERPA — is the federal law that protects the privacy of student education records and identifies the rights of students and their families with respect to student education records kept by institutions.

## Under FERPA, you have the right to:

- Have some control over the disclosure of information from your education records
- Inspect and review your education records
- Request the amendment of inaccurate or otherwise inappropriate education records

## eLion

[elion.psu.edu](http://elion.psu.edu)

On eLion, you can register for courses, find adviser assignments, view student aid summaries, pay semester bills, check grades, drop or add courses, update address information, and more. Parents must have a Friends of Penn State account or a Penn State access account to log into eLion. A Friends of Penn State account can be created at <https://elion.psu.edu/ParentInstructions.html>. Your parents/guardians must be authorized by you to gain access on eLion.

## Your Penn State id+ Card

[www.idcard.psu.edu](http://www.idcard.psu.edu)

103 HUB-Robeson Center

814-865-7590

The id+ Office issues University ID cards to students and is the central office responsible for the support of all ID card related services for all Penn State campuses. You are required by University policy to obtain and carry your id+ card at all times. The id+ card is transferrable from campus to campus. Your id+ card is a vital part of life at Penn State, providing easy access to University resources and services, such as library services and access to the residence halls, athletic events, and testing centers. The id+ card is also the mechanism used for accessing the Campus Meal Plan, LionCash+, and PNC Bank (optional) accounts.

## Office of the Bursar

[www.bursar.psu.edu](http://www.bursar.psu.edu)

103 Shields Building

814-865-6528

The Office of the Bursar is responsible for the maintenance of student accounts pertaining to acceptance fees, tuition billing, charges, payments, financial aid disbursements, and refunds of excess funds when available.

## Student Checklist

- Obtain PSU ID card and full eLion access
- Sign up for Rapid Refund
- Sign up for electronic delivery of Form 1098-T
- Grant online access for parents/other individuals (optional)

## When will I receive a tuition bill?

Approximately six weeks prior to the start of classes, bills will be prepared for students who have a class schedule **and** an active Penn State Access Account (<http://ait.its.psu.edu/services/identity-access-management/identity/accounts/>). You will receive notification via your Penn State e-mail account when your tuition bill is available to view/pay or to confirm registration on eLion. Paper bills are not mailed.

## Completing Your Registration

The Penn State registration process consists of two steps. First, you register for specific courses. Second, your registration will be complete upon payment of tuition and fees or confirmation of registration electronically (even when all charges will be covered by financial aid). In all cases, action is required to complete registration.

## Anticipated Tuition Due Dates

Summer 2014: Bill due dates will vary

Fall 2014: August 1, 2014

Spring 2015: December 5, 2014

## Tuition Calendar

[www.tuition.psu.edu](http://www.tuition.psu.edu)



## Office of Student Aid

[studentaid.psu.edu](http://studentaid.psu.edu)

314 Shields Building

814-865-6301

The Office of Student Aid at University Park administers all major types of federal, state, and University financial aid.

## Loans

### Federal Direct Stafford Loan

To receive the federal Direct Stafford Loan, students must submit the Free Application for Federal Student Aid (FAFSA) at [fafsa.ed.gov](http://fafsa.ed.gov);  
<http://studentaid.psu.edu/types-of-aid/loans/stafford>

### Federal Direct Parent PLUS Loan (PLUS)

Parents of dependent undergraduate students may apply for a PLUS loan. For information visit <http://studentaid.psu.edu/types-of-aid/loans/about-parent-PLUS>.

### Private Alternative Loans

Students can seek additional funding from private alternative loans.  
<http://studentaid.psu.edu/types-of-aid/loans/private-alternative>

## Scholarships

Students who are offered admission and submit the FAFSA to Penn State are considered for scholarships awarded by the Office of Student Aid.  
<http://studentaid.psu.edu/types-of-aid/scholarships>

## Know the Rights and Responsibilities of a Financial Aid Recipient

Review Penn State's Satisfactory Academic Progress Standard to understand the requirements to remain eligible for student aid.  
<http://studentaid.psu.edu/eligibility/federal-student-aid-satisfactory-academic-progress-standard>

## Verification

The Office of Student Aid is required by the federal government to verify the information submitted on the FAFSA. Respond to requests for verification documents from the Office of Student Aid to avoid a delay in the processing of student aid.  
<http://studentaid.psu.edu/aid-the-bill/about-verification>

## Confirm Student Registration on the Tuition Bill

You must confirm your registration on your tuition bill every semester. If the bill is covered in full by financial aid, registration must be confirmed at "Bursar Tuition Bills" on eLion to avoid loss of student aid.

## Check Penn State Email

The Office of Student Aid communicates with you through your Penn State email account, available at [webmail.psu.edu](http://webmail.psu.edu).

## Campus Employment and Work Study

<http://studentaid.psu.edu/types-of-aid/work-study-and-employment>

All students who submit the Free Application for Federal Student Aid (FAFSA) to Penn State are considered for work-study. If you are awarded work-study, it will be listed on the "Student Aid Summary" on eLion. If you did not receive a work-study award, there are many employment opportunities other than work-study.

More than 1,000 students work on campus with Food Services, Penn State Bakery, Bryce Jordan Center, Housing, Residence Life, and Hospitality Services. You can work 10-20 hours a week with a flexible schedule that works around your class schedule. Contact the offices listed below for on-campus employment opportunities.

### Athletic Department:

[gopsusports.com](http://gopsusports.com)

814-865-1757

### Bryce Jordan Center:

[www.bjc.psu.edu/About/Employment](http://www.bjc.psu.edu/About/Employment)

814-863-1225

### Housing, Food Service & ResCom:

[www.abshr.psu.edu](http://www.abshr.psu.edu)

### Residence Life:

[studentaffairs.psu.edu/reslife/prospective/studentstaff.shtml](http://studentaffairs.psu.edu/reslife/prospective/studentstaff.shtml)

### Hospitality Services

<http://www.pshs.psu.edu/penn-state-hotels/employment.cfm>

### Eco-Rep (Campus Sustainability Office)

<http://sustainability.psu.edu/live/what-students-can-do/programs/eco-reps>

814-865-7488



# Key Dates 2014-2015 Academic Year

www.registrar.psu.edu

## Fall Semester 2014

Fall Semester Tuition Due.....	August 1
New Student Arrival Days*.....	August 22 - 23
Welcome Week .....	August 22 - 30
Classes Begin.....	August 25
Drop Period*.....	August 25 - Sept 3
Add Period** .....	August 25 - Sept 4 at 8:00am
Labor Day – No Classes.....	September 1
Parents & Families Weekend .....	October 10 - 12
Spring Semester Tuition Bill Arrives (to student's email account).....	Mid-November
Late Drop Ends** .....	November 14
Residence Halls close at 10:00am.....	November 22
Thanksgiving Holiday – No Classes.....	November 23 - 29
Residence Halls reopen at 3:00pm .....	November 28
Spring Tuition Due.....	December 5
Withdrawal Deadline.....	December 12
Classes End .....	December 12
Study Days.....	December 13 - 14
Final Exams .....	December 15 - 19
Residence Halls close at 4:00pm.....	December 20

## Spring Semester 2015

New Student Arrival Day* .....	January 10
Winter Welcome .....	January 10 - 17
Residence Halls open at 8:00am for returning students.....	January 10
Classes Begin.....	January 12
Drop Period** .....	January 12 - January 21
Add Period .....	January 12 - January 22 at 8:00am
Martin Luther King Day – No Classes.....	January 19
Residence Halls close at Noon.....	March 7
Spring Break – No Classes.....	March 8 - 14
Residence Halls reopen at 10:00am .....	March 15
Late Drop Ends** .....	April 10
Withdrawal Deadline .....	May 1
Classes End .....	May 1
Study Days.....	May 2 - 3
Final Exams .....	May 4 - 8
Residence Halls close at 4:00pm.....	May 10

\*New international students will arrive several days prior to this date. \*\*These dates apply to full semester courses.



# for managing your money without being a finance major.

**PNC is making it incredibly easy for you to keep track of your money at Penn State.** We have branches and ATMs on and near campus. And with PNC Virtual Wallet® Student and lots of mobile banking options, managing your money is easy too. Simplify things even more by using your id+ card as your PNC ATM card once you choose to link it to your PNC account. For more information, go to [pnc.com/psu](http://pnc.com/psu) or visit a branch near you.



The PNC Bank relationship benefits students and the University. The University receives financial support from its relationship with PNC Bank. Annual financial support from PNC Bank helps to support operating expenses for the id+ card program as well as other University services. Please direct questions about the University's relationship with PNC Bank to the id+ Office.

PNC does not charge a fee for Mobile Banking. However, third party message and data rates may apply. These include fees your wireless carrier may charge you for data usage and text messaging services. Check with your wireless carrier for details regarding your specific wireless plan and any data usage or text messaging charges that may apply. Also, a supported mobile device is needed to use the Mobile Banking app. Mobile Deposit is a feature of PNC Mobile Banking. Use of the Mobile Deposit feature requires a supported camera equipped device and you must download a PNC Mobile Banking app. Eligible PNC Bank account and PNC Bank Online Banking required. Certain other restrictions apply. See the mobile banking terms and conditions in the PNC Online Banking Service Agreement.

©2014 The PNC Financial Services Group, Inc. All rights reserved. PNC Bank, National Association. **Member FDIC**

UNV PDF 0414-096-177904

# State College's *Only* Cottage Style Student Living!



IT'S RIGHT HERE.



With our spacious 2, 3, 4 and 5 bedroom cottages, individual leases and unbeatable amenity package, you'll see that we have everything you need, everything you want, and a few extra surprises—**ALL RIGHT HERE.**

**Schedule a tour or sign your lease online! [RetreatStateCollege.com](http://RetreatStateCollege.com)**

300 Waupelani Drive | State College, PA 16801 | 814.231.0871





# Campus Living





# Involvement Opportunities and Campus Resources

## Student Affairs

Student Affairs ([studentaffairs.psu.edu](http://studentaffairs.psu.edu)) provides programs and services to promote your intellectual and personal development of students throughout your college career. Enrich your life and the lives of others while at Penn State by participating in the campus and surrounding community. Discover new challenges and meet new people in any of the more than 900 student organizations including opportunities in service learning, recreation and sports, leadership, music and theatre, and so much more. Additionally, a wide-range of programs are provided including direct services for students seeking counseling, health care, career assistance, student activities, legal advice, conflict resolution, leadership development, religious or spiritual opportunities, and residence life.

## Adult Learner Programs and Services

[studentaffairs.psu.edu/adults](http://studentaffairs.psu.edu/adults)

210 Boucke Building  
814-863-7378

Adult Learner Programs provides advocacy, programming, and resources for non-traditional aged students and student veterans seeking their undergraduate degree. Students returning to higher education, or beginning college after working or raising a family or serving in the military are encouraged to contact our office upon arrival. Information and referrals about admission, child care, financial aid, housing, University policies or procedures, as well as referral to the appropriate University or Community resource are available. A series of adult learner programs including budgeting, financial aid, time management, e-portfolio building, career services, education abroad, and technology workshops are offered to support personal and career goals.

## Career Services

[studentaffairs.psu.edu/career](http://studentaffairs.psu.edu/career)

Bank of America Career Services Building  
814-865-2377

Penn State students are encouraged to be active in career planning throughout their entire college career. Career Services offers resources that can help students in all aspects of career development, including the exploration of academic majors and career options, gaining experience; as well as skill development in resume writing, interview strategies, and job, internship, and graduate school searches. To accomplish these goals, Career Services provides individual career counseling, career assessments, educational workshops, a print and online resource library; and coordinates career fairs, job and internship postings, on-campus interviewing, and opportunities for networking with alumni.

## Center for Spiritual and Ethical Development

[studentaffairs.psu.edu/spiritual](http://studentaffairs.psu.edu/spiritual)

Pasquerilla Spiritual Center & Eisenhower Chapel  
814-865-6548

The Center for Spiritual and Ethical Development (CSED) provides a venue and programs for the ethical, spiritual, and character development of the University community. Penn State supports the principle of religious freedom and believes that religious practices, spiritual inquiry, and holistic development have a place within University life; however, Penn State endorses no particular religion or religious group. The Center hosts a culturally diverse, multi-faith community in which success is realized only through trust, mutual respect, and the struggle that genuine interaction sometimes requires.

## Center for Women Students

[studentaffairs.psu.edu/womenscenter](http://studentaffairs.psu.edu/womenscenter)

204 Boucke Building  
814-863-2027

The Center for Women Students provides advocacy, referrals, and resources to all students at Penn State. Materials and programming are available on issues including sexual assault/rape, relationship violence, sexual harassment/stalking, and body image. Trained peer educators — Peers Helping Reaffirm, Educate, and Empower (PHREE), and Men Against Violence (MAV) — also are available for facilitations. Both of these groups always welcome new members who are interested in educating fellow students.

## LGBTQ Student Resource Center

[studentaffairs.psu.edu/lgbta](http://studentaffairs.psu.edu/lgbta)

101 Boucke Building  
814-863-1248

The Lesbian, Gay, Bisexual, Transgender, Ally (LGBTQ) Student Resource Center provides education, information, and advocacy services to create and maintain an open, safe, and inclusive environment for students, faculty, and staff who are lesbian, gay, bisexual, or transgender. The LGBTQ Student Resource Center offers several resources, including safe space, extensive library, LGBTQ lecture series, and leadership development activities.



“ Besides your school work, getting involved is the next most important thing. Getting involved opens countless opportunities not only for advancement in your education, but also helping you grow as an individual. ”

Garrett W.  
Sophomore  
Finance



## Paul Robeson Cultural Center

[studentaffairs.psu.edu/cultural](http://studentaffairs.psu.edu/cultural)

21E HUB-Robeson Center

814-865-1779

The Paul Robeson Cultural Center at The Pennsylvania State University is a unit within Student Affairs, which seeks to make true the mission of the institution by serving students in the development of character, conscience, and social responsibility through fostering diversity, multiculturalism, social justice, and inclusion.

## Student and Family Services

[studentaffairs.psu.edu/familyservices](http://studentaffairs.psu.edu/familyservices)

120 Boucke Building

814-863-4926 (Main Office)

814-863-2020 (Student and Family Crisis Line)

The Office of Student and Family Services leads response efforts related to campus, student, and family emergencies including coordinating support efforts to students who may need personal and academic accommodations due to unforeseen personal or family crisis and/or tragedy. Staff also provides on-going, personal contact with students, family members, and friends in an effort to provide information and assistance with administrative processes and support services at the University.

## Student Legal Services

[studentaffairs.psu.edu/legalservices](http://studentaffairs.psu.edu/legalservices)

120 Boucke Building

814-867-4388

The Office of Student Legal Services provides legal advice, counsel, and representation to University Park students. Legal services are free, but students pay their own legal expenses such as filing fees or fines. The office advises students about a range of legal concerns including landlord-tenant disputes, consumer problems, summary criminal offenses, uncontested divorces, small claims actions, name changes, some immigration matters, simple wills, and powers of attorney. The office does not provide representation to students in conflict with the University or other students. Submit an Intake Form on the website to request services.

## Union and Student Activities

[www.studentaffairs.psu.edu/hub](http://www.studentaffairs.psu.edu/hub)

HUB-Robeson Center

814-863-9755

Union and Student Activities is committed to providing all students with opportunities to become engaged in high-quality cocurricular experiences. Union and Student Activities provides a variety of cultural, educational, social, and recreational programs for all students. Other opportunities include touring one of the art galleries, visiting the Penn State Bookstore, dining in one of the HUB eateries, or just sitting in a comfortable chair to study or relax. Union and Student Activities strives to provide an environment that fosters respect, values all individuals, appreciates diversity, and celebrates the contributions of the entire Penn State community.

## Fraternity and Sorority Life

[www.greeks.psu.edu](http://www.greeks.psu.edu)

215 HUB-Robeson Center

814-863-8065

With 90 Greek-letter organizations at Penn State, membership in a social or service fraternity or sorority offers the opportunity for students to develop leadership skills, serve the University and broader community, and build lifelong friendships. Students may join fraternities and sororities during the fall semester of your first year. The new member education process for chapters under the Panhellenic Council (PC) and the Interfraternity Council (IFC) varies from six to twelve weeks. Chapters under the Multicultural Greek-Letter Council (MGC) and the National Pan-Hellenic Council (NPHC) conduct recruitment or intake through interest meetings that occur on a rolling basis.

## Student Activities

[www.studentaffairs.psu.edu/hub/studentactivities](http://www.studentaffairs.psu.edu/hub/studentactivities)

209 HUB-Robeson Center

814-863-4624

Student Activities is committed to the cocurricular learning, development, and engagement of students by providing involvement opportunities and resources, advising individual students and student organizations, promoting active and responsible citizenship, and developing collaborative community partnerships. Students can enhance leadership skills; participate in service programs; attend a Student Programming Association (SPA) concert, lecture, LateNight, or other event; take a class through the Center for Arts & Crafts; join a student organization by attending the Involvement Fairs or going to [www.clubs.psu.edu](http://www.clubs.psu.edu); or participate in one of the several student organizations advised by the office such as Homecoming, Students Engaging Students, SPA, Fresh START, the Martin Luther King Commemoration Committee, and others.

## Penn State's Sustainability Institute

[sustainability.psu.edu](http://sustainability.psu.edu)

Penn State's Sustainability Institute facilitates the integration of sustainability into all functions of the University. The Sustainability Institute is open to a wide range of initiatives and supports a variety of projects that embody the three goals: Learn, Live, and Lead. Penn State now has the opportunity, the responsibility, and the great honor of molding a sustainable future. Programs and initiatives engage students, faculty, staff, and more with sustainability at Penn State.



“As an international student, don't be scared to approach people and make friends. Also join at least one club and try to get involved on campus. You get to meet a lot of people through this and make friends and that really helps settling in and avoiding homesickness.”

Nayantara S.  
Senior  
Psychology and Criminology

# Athletics, Recreation & Fitness



## Student Recreation

[www.athletics.psu.edu/rec/](http://www.athletics.psu.edu/rec/)

Recreational Sports provides Penn State students opportunities to participate in their favorite recreation activities while promoting healthy lifestyles and developing student leadership opportunities. Student recreation is an important out-of-classroom experience which enables students to remain active, to pursue learning a new activity, playing on a team, winning a championship, having a job and enjoying campus life. Student work opportunities exist within the recreation programs. Work-study positions and wage payroll positions are available. Questions can be directed to the various buildings below, or on our website.

## Fitness

[www.athletics.psu.edu/fitness](http://www.athletics.psu.edu/fitness)

On campus there are three recreation buildings, two swimming pools, two golf courses, tennis courts, an ice arena and an off-campus outdoor area. There are four fitness areas on campus located in the IM Building, Rec Hall, McCoy Natatorium and White Building. To access these areas, a student must purchase a Fitness Pass at [fitnessmembership.psu.edu](http://fitnessmembership.psu.edu). Passes may be purchased by the semester or for the academic year. Facility operating hours can be accessed by contacting 814-865-3488.

## Adventure Recreation

[www.athletics.psu.edu/advrec](http://www.athletics.psu.edu/advrec)

140 White Building  
814-863-2895

Adventure Rec is a recreation program that promotes outdoor activities and adventures. Trips, workshops, mapping material, and equipment are some of the services available in this program.

## Club Sports

[www.athletics.psu.edu/recreation](http://www.athletics.psu.edu/recreation)

143 White Building  
814-867-2087

Club Sports provides students opportunities to continue to follow their passion of playing a favorite sport. Currently there are 78 club sports and student membership involves dues, sometimes “trying” out, and providing your own equipment.

## Intercollegiate Athletics

[www.gopsusports.com](http://www.gopsusports.com)

800-Nittany

Penn State University is a member of the Big Ten Conference. Thirty-one varsity sports are offered in both men’s and women’s competition. The sports are governed by the NCAA. The teams are highly competitive both within the Big Ten and on the national level. Competitions are both home and away, and our sport venues are some the best fields and arenas in the country. Numerous National Championships have been won by the Nittany Lions and students can count on seeing fast, exciting, quality games. The majority of games are free to students who show their valid PSU id+ Card. Both football and basketball require ticket purchases. Visit [www.gopsusports.com](http://www.gopsusports.com) to connect with team pages, schedules, and ticket information.

## Intramural Sports

[www.athletics.psu.edu/recsports](http://www.athletics.psu.edu/recsports)

Room 2, IM Building  
814-865-5401

Intramural Sports offers students 25 activities including team, dual, and individual sports. The cost is minimal and play occurs in Residence Hall, Fraternity, Women’s, Open, and Co-Rec Divisions.



“ I absolutely love club sports. I am very involved in Ultimate Frisbee. The team is student run, like all of the other clubs, and it feels amazing to play for the greatest University in the country. ”

Orly O.  
Sophomore  
Statistics

“ There are so many things you can do for fun at Penn State ranging from sitting in Findlay commons to having a late night snow-ball fight at Old Main Lawn. One of my favorite recreational things to do is watching and supporting one of our many athletics team. Football, basketball, wrestling, volleyball, soccer, or any of our other teams have games frequently and a lot of them are free. ”



Meeten D.  
Senior  
Information Sciences & technology





Universal Community Behavioral Health

**1-800-641-7529**

Free mental health assessments 24/7

We hope you never  
feel the need to call...

But if you do,  
we hope you will.



**Housing is our business,**  
*but customer service is our main focus!*

*Call PMI today for Downtown housing  
from efficiencies to 2-bedrooms*

**814-278-7700**  
**www.rentpmi.com**



Make Us  
your  
**Home**  
from away  
**Home**  
for the  
**Next 4 years**

On campus and near the excitement of downtown State College, the Penn State Hotels are the gateway to your next Happy Valley visit. Enjoy a summer trip or pop over during our beautiful autumn months. Kick your feet up in the luxurious, spacious, and comfortable rooms of the historic Nittany Lion Inn or The Penn Stater. Take advantage of full-service accommodations, complimentary shuttle service to downtown and earn reward points toward your next visit with Stash Hotel Rewards!

Start your new Penn State tradition today.  
[www.pennstatehotels.com](http://www.pennstatehotels.com) • 800-233-7505

**THE NITTANY LION INN**

**THE PENN STATER**  
Conference Center  Hotel

The Nittany Lion Inn and Penn Stater Conference Center Hotel are owned and operated by The Pennsylvania State University.

[www.pennstatehotels.com](http://www.pennstatehotels.com)



# We're Hiring!

*Flexible hours, work on campus,  
national chain experience*

*HUB  
Dining*

HUB-Robeson Center  
On-Campus

Burger King® • Chick-fil-A® • Jamba Juice® • McAlister's Deli® • Sbarro® • Starbucks®

Join Penn State Federal today and learn about  
the Credit Union difference!

Checking Accounts | Savings Accounts  
Auto Loans | Personal Loans | Mobile Banking



Penn State Federal

Credit Union

[www.PennStateFederal.com](http://www.PennStateFederal.com)

Membership  
Eligibility Required



NCUA

## LUTHERAN STUDENT COMMUNITY



*Feed your body, mind and spirit*

Worship • Friends • Bible Study • Service • Prayer • Dinner

*Come and See!*

John 1:46

[www.lutheranpennstate.org](http://www.lutheranpennstate.org)

**Everyone is Welcome**

[lutheran@psu.edu](mailto:lutheran@psu.edu) or call (814) 865-0715

Sponsored by Lutheran Campus Ministry and Grace Lutheran Church

## GLIDE ON!

See Penn State Campus Your Way,  
By Segway!



Now you can glide by the entire Penn State Campus  
on an eco-friendly Segway. Tours are fully guided,  
information-packed and truly unforgettable!

Happy Valley  
TOURS™

814.231.0141 [HappyValleyTours.net](http://HappyValleyTours.net)



# Housing, Food Services & Residence Life

## Living On Campus

[www.housing.psu.edu](http://www.housing.psu.edu)

We are excited to have you join our on-campus community! University Park has 52 residence halls, 5 common buildings, and 359 apartments on campus. Close to 14,000 undergraduates and more than 300 graduate students reside on campus. University housing provides residential facilities that offer convenience, high value, security, and a wide scope of programs and services designed to help you succeed.

## Residence Life

[studentaffairs.psu.edu/reslife](http://studentaffairs.psu.edu/reslife)

201 Johnston Commons

814-863-1710

Residence Life is committed to providing a safe and comfortable living-learning environment that fosters academic, social, cultural, and personal growth. Students are encouraged to get to know their Residence Assistant (RA), a student leader specially trained to help with questions and build a sense of community among residents. Each residence hall area has student and professional staff members who live in the community and are available 24/7 to provide information and resources, offer help and support, plan social and educational activities, and address residents' concerns.

## Fall 2014 Arrival Days

Visit [www.arrival.psu.edu](http://www.arrival.psu.edu) to learn more about how to prepare for fall arrival, such as items to bring, parking information, and check-in locations. The site is designed to help you make the most out of this hectic, but exciting time!

## Getting Ready for Move-In

[www.arrival.psu.edu](http://www.arrival.psu.edu)

For arrival details visit the arrival days website for lists of what to bring, what not to bring, and any last-minute changes regarding your residence hall room check-in process. If your family members want to stay overnight during arrival, they will need to make lodging arrangements well in advance. You'll receive a packet in the mail that will include information about arrival days, a campus guide, and a parent meal card.

## Living with a Roommate

[studentaffairs.psu.edu/reslife](http://studentaffairs.psu.edu/reslife)

Living with a roommate is an important part of the college experience. Information about roommate relationships and other residence hall topics will be discussed during Welcome Week and can be found on the Residence Life website.

## Making Yourself at Home

[www.housing.psu.edu](http://www.housing.psu.edu)

Residence hall rooms are furnished with all the basics you'll need including an XL twin bed, desk and chair, refrigerator/microwave, and closet. Each residence area provides additional amenities to make your stay complete — dining and laundry facilities, study and social lounges, computer labs, and a commons desk where you can pick up mail and packages, send and receive faxes, and obtain a temporary Penn State id+ card if needed.

## Staying Safe

Penn State has established a number of security measures in the residence halls. Each residence hall has a card-access system that operates 24 hours a day, seven days a week, whenever the halls are occupied. Students have access only to the building in which they live. In addition, the Residence Hall Security Unit checks for propped doors, monitors activities in the commons areas, and assists students who have questions or difficulties with the card-access system.

To review the residence hall community safety guidelines, see the Terms, Conditions, and Regulations found in the Housing Contract packet and at [www.housing.psu.edu/housing/housing-contracts/terms-and-conditions](http://www.housing.psu.edu/housing/housing-contracts/terms-and-conditions) on the Housing and Food Services website.

## Residential Computing Services (ResCom)

[www.rescom.psu.edu](http://www.rescom.psu.edu)

ResCom is your computer technical support service that Penn State Housing offers, free of charge, to students residing in the residence halls at University Park. ResCom operates help desks conveniently located in Findlay, Pollock, and Waring Commons.

Visit the ResCom website for detailed step-by-step instructions on how to connect to the residence hall wireless network. You can register online through the ResCom website for a wired ethernet connection in your room for any device you own that cannot connect to building wireless.

## Dining Options

[www.foodservices.psu.edu](http://www.foodservices.psu.edu)

Penn State Food Services, one of the largest in the country, purchases over \$30 million in goods each year and the dining commons serve 1.4 million meals each semester.

Currently, Penn State serves all on-campus residents, and 14,000 LionCash+ members. Penn State operates five on-campus dining commons and multiple restaurants and coffee shops.

A Campus Meal Plan, accessed by your id+ Card, is required for all students living on campus. Students are able to use the Campus Meal Plan to purchase food at any location on campus. Each residence area features a variety of dining options. You'll find bountiful selections in the dining commons, campus restaurants, snack bars, convenience stores, and coffee shops. Carry-out options are available in every dining commons. Each dining commons offers choices for healthy and vegetarian diets, and food items are labeled with nutrition information. Students with special dietary needs are encouraged to contact Food Services' registered dietician prior to arrival.

## Meal Plans for Off-Campus Students

[mealplans.psu.edu](http://mealplans.psu.edu)

### LionCash+

For students who like to eat on campus and want the ability to use the plan at participating off-campus restaurants and convenience stores.

### Commuter Meal Plan

For students who like to eat on campus, but would like to charge the plan to the Bursar account (Available for purchase prior to the tuition billing due date).

### Campus Meal Plan

For students who eat 12 or more meals per week in the dining commons.

## Housing Beyond the First Year

[www.eLiving.psu.edu](http://www.eLiving.psu.edu)

On-campus housing is not guaranteed after your first year on campus. Students interested in living on campus must participate in the eLiving Housing Contract process by submitting a request for a Housing Contract during the established timeline. Sometimes, the demand for on-campus housing exceeds the amount of space available. In that case, not every student who submits a request will receive an offer and will automatically be added to the Waitlist. Information sessions are conducted during the fall semester to help students navigate the process.



“When living with someone you didn't know before coming to college, it's important to consider how they're feeling. Remember that they're going through all of the same changes that you are.”

Mary M.  
Sophomore  
Chemical Engineering



# Cable TV: Residence Halls

## Channel Listings

<http://www.hfs.psu.edu/housing/housing/tv-service.cfm>

Housing provides at least one cable television connection in each residence hall room and on-campus apartment. To use the service, connect your TV to the wall jack (no cable box is required) with a standard coaxial television cable (not provided). Approximately 130 channels are provided in a mix of analog and digital formats, including several high definition (HD) digital channels and music channels. Review the web page above for more information, including television set compatibility and a listing of the channels provided.

### Channel # Channel Name

02	The Weather Channel
03	WPSU PBS
04	WPSU Create
05	WPSU World
06	WATM ABC Altoona
07	WPXI NBC Pittsburgh
08	WTAJ CBS Altoona
09	WWCP Fox Altoona
10	WJAC NBC Johnstown
11	WPCW CW Pittsburgh
12	QVC
13	Headline News
14	Residence Life Cinema
15	College of Communications
16	Teleconference Channel
17	PCN
18	C-Net
19	CNBC
20	Fox News
21	CNN
22	CSPAN
23	CSPAN 2
24	Discovery Channel
25	BET
26	CMT
27	VH 1
28	MTV
29	MTV 2
30	MTV U
31	Fox Soccer World
32	Fox Sports Pittsburgh
33	Big Ten Network
34	ESPN
35	ESPN 2
36	ESPN News
37	ESPN U
38	College Sports TV
39	NFL Network
40	TNT
41	Syfy
42	E!
43	IFC
44	ABC Family
45	Disney
46	Nickelodeon
47	Cartoon Network
48	TBS
49	Animal Planet
50	Bravo
51	Comedy Central
52	The Learning Channel
53	Travel

54	Food
55	A & E
56	WHVL State College
57	Lifetime
58	History Channel
59	BBC America
60	FX Network
61	Current TV
62	Speed
63	G4 TV
64	USA Network
65	Spike TV
66	Comcast SportsNet Philadelphia
67	Versus
68	National Geographic
69	Golf
70	TV Guide Channel
96	SCOLA

### HD Digital

#### Channel # Channel Name

71-1	WPSU HD
71-2	WWCP FOX HD
72-1	WATM ABC HD
72-2	WJAC NBC HD
73-1	WHVL HD
73-2	WTAJ CBS HD
74-1	WPCW CW HD
74-2	Big Ten Network HD
98-1	College of Communications

### SD Digital

#### Channel # Channel Name

72-3	MeTV
75-2	NBA TV
75-3	Outdoor Channel
75-4	Sportsman Channel
75-5	Tennis Channel
76-1	GSN
76-2	Hallmark
76-3	HGTV
76-4	MSNBC
76-5	Oxygen
76-6	Style
76-7	TBN
76-8	TCM
76-9	truTV
76-10	TV Land
77-1	AMC
77-2	BBC America
77-3	Biography
77-4	DIY
77-5	Cooking
77-6	Fox Business
77-7	History International
77-8	Lifetime Move Network
77-9	Logo
77-10	Toon Disney
78-1	CMT Pure Country
78-2	DAYSTAR
78-3	Gospel Music Channel
78-4	Hallmark Movie Channel
78-5	MTV Hits
78-6	MTV Tr3s
78-7	Teen Nick
78-8	TV One
78-9	VH1 Classic

79-1	C-SPAN 3
79-2	Encore
79-3	Encore Action
79-4	Encore Drama
79-5	Encore Love
79-6	Encore Mystery
79-7	Encore Westerns
79-8	Great American Country
79-9	Nick 2
79-10	Nick Jr.
79-11	Sprout
80-1	EWTN
80-2	Fit TV
80-3	Flix (E)
80-4	Flix (W)
80-5	Nat Geo Wild
80-6	ART (Arabic)
80-7	TV (Asia)
80-8	Univision (Spanish)
80-9	TV 5 (French)
80-10	CCTV (Chinese)
80-11	RAI (Italian)

### Digital Music

#### Channel # Channel Name

95-5	MC-Solid Gold Oldies
95-6	MC-R&B Classics
95-7	MC-Classic Alternative
95-8	MC-Reggae
95-9	MC-Dance Electronica
95-10	MC-Hit List
95-11	MC-80s
95-12	MC-Contemporary Christian
95-13	MC-Throwback Jamz
95-14	MC-Hip-Hop Classics
95-15	MC-Rap
95-16	MC-Adult Alternative
95-17	MC-R&B Soul
95-18	MC-Gospel
95-19	MC-Metal
95-20	MC-Rock
95-21	MC-Retro Rock
95-22	MC-Classic rock
95-23	MC-Soft Rock
95-24	MC-90s
95-25	MC-Stage & Screen
95-26	MC-Kidz Only
95-27	MC-Toddler Tunes
95-28	MC-Hip-Hop and R&B
95-29	MC-MixTape
95-30	MC-Smooth Jazz
95-31	MC-Jazz
95-32	MC-Soundscapes
95-33	MC-Classical Masterpieces
95-34	MC-Light Classical
95-35	MC-Sounds of the Season
95-36	MC-Today's Country
95-37	MC-True Country
95-38	MC-Classic Country
95-39	MC-Easy Listening
95-40	MC-Singers & Swing
95-41	MC-Pop Latino
95-42	MC-Tropicales
95-43	MC-Party Favorites
95-44	MC-Musica Urbana
95-45	MC-70s
95-46	MC-Blues
95-47	MC-Pop Hits
95-48	MC-Alternative
95-49	MC-Mexicana
95-50	MC-Romances

# Off-Campus Living

## Off-Campus Living

[studentaffairs.psu.edu/offcampus](http://studentaffairs.psu.edu/offcampus)

234 HUB-Robeson Center

814-865-2346

Visit the Off-Campus Living office for information regarding lease agreements, tips for apartment searching, security checklists, communicating with landlords, and other important resources for being an informed renter. Many students begin looking for off-campus housing as early as October. Visit the Off-Campus Living website for a listing of local rental properties as well as a list of students seeking roommates/suitemates.

### Off-Campus Housing Fairs

For the opportunity to ask questions about off-campus living, talk to realtors, and schedule apartment tours and attend an Off-Campus Living Housing Fair:

**Sunday, October 12, 2014**

Alumni Hall, HUB-Robeson Center

11:00am – 4:00pm

**Saturday January 31, 2015**

Alumni Hall, HUB-Robeson Center

11:00am – 4:00pm

### Living Off Campus: Useful Tips

#### Arrival: Call Ahead

The starting date on your lease will determine how soon you can move in. Contact your rental office before you come to State College, because policies vary from building to building. If you are subletting from current tenants, check with them to determine how early you can move in.

### Parking: Don't Get Ticketed or Towed

When you arrive, unload your belongings quickly and move your car or trailer away from the building entrance.

The people moving in after you will need the unloading space. In addition to on-street parking, the State College Borough (814-278-4769) operates parking garages on South Fraser Street, South Pugh Street, and West Beaver Avenue, a parking deck on McAllister Street, and parking lots on South Fraser Street, South Allen Street, and West Beaver Avenue.

### Your Lease: Know What You Signed

Your lease is a legally binding agreement between you and your landlord. Don't sign or fill out an application or make a deposit until you are certain you want the place. Once you sign an application or lease, you are committed to all its terms. Find out what is provided before signing the lease. Verbal leases are binding in Pennsylvania. If you and your landlord end up in court, it's your word against his or hers as to the actual terms. For your protection, enter a verbal lease carefully.

### Make a Damage List: Check It Twice

Preparing an accurate damage list is the best way to protect your security deposit. When you move in, the first thing you should do is inspect your rental apartment or house for damages and prepare a complete damage list. Some landlords give tenants their own form; if your landlord doesn't have one, obtain a sample damage list from the Off-Campus Living office or on the website listed above.



## Taste of the Month

*Town&Gown* magazine's monthly focus on food

*If it's happening in Happy Valley, it's in Town&Gown!*



# Health & Wellness

## University Health Services (UHS) Student Health Center [studentaffairs.psu.edu/health](http://studentaffairs.psu.edu/health)

Bigler Road

It's important for you to stay healthy. UHS is here to provide resources and education that can help. If you get sick or have a pre-existing condition, our experienced and caring medical professionals provide a wide range of high-quality health services. Services include advice nurse, pharmacy, medical appointments, physical therapy, x-ray, and on-site laboratory.

### Appointments

You can schedule appointments online through myUHS ([studentaffairs.psu.edu/health/myuhs](http://studentaffairs.psu.edu/health/myuhs)) or call during regular business hours. Same-day appointments are available for acute medical problems. Appointments for routine health concerns are generally available within a few days.

### Billing and Fees

Penn State does not charge a semester health care fee to students. Only students who receive UHS services have to pay fees. Payment is accepted at the time of service by cash, credit, or by accepted insurances.

### Don't forget to pack:

- Medical Insurance Card
- Medical Records
- Prescription Card
- First Aid Kit

## Get Involved with Student Wellness

<http://studentaffairs.psu.edu/health/volunteer/>

Clinical Services - Clinic volunteers work closely with members of the clinical staff, assist the nurses in a variety of duties, and assist patients. Volunteers get a first-hand understanding of the dynamics of the health care system.

Emergency Medical Services (EMS) - The Office of Emergency Medical Services is always looking for certified Pennsylvania EMTs and Paramedics to become new volunteers. EMS operates the University Ambulance Service (UAS) and coordinates emergency medical services for nearly 300 special events each year.

Health Promotion and Wellness (HPW) - HealthWorks is a peer education outreach program dedicated to serving the Penn State community by educating students about wellness including nutrition; sexual health; and alcohol, tobacco and other drug issues.

## Counseling and Psychological Services [www.studentaffairs.psu.edu/counseling](http://www.studentaffairs.psu.edu/counseling)

501 Student Health Center  
814-863-0395

The Center for Counseling and Psychological Services (CAPS) strives to help students resolve personal issues that may interfere with their academic progress, social development, and satisfaction at Penn State. Common concerns for students include homesickness, depression and anxiety, addictions, lack of motivation, relationship problems, eating disorders, sexual assault, and uncertainties about personal values and beliefs. Services are confidential and basic counseling services are free for full-time students. For emergencies after hours and weekend crisis situations, mental health professionals are available by calling the twenty-four-hour emergency Centre County CAN HELP line at 1-800-643-5432.



“It's normal to feel overwhelmed, so just give yourself a couple of weeks to adjust and relax; you'll find a comfortable routine.”

Silvana L.  
Junior  
Neuropsychology

**Walmart**   
Save money. Live better.

Your Back-to-School Headquarters

**A Part of the Penn State  
Community Since 1991.**

WAL-MART  
373 Benner Pike  
State College, PA 16801  
(814) 235-9306

WAL-MART  
1665 N. Atherton St.  
State College, PA 16803  
(814) 237-8401

**Open 24 Hours**

# Campus Safety

## University Police

[www.police.psu.edu](http://www.police.psu.edu)

Eisenhower Parking Deck

814-865-7864

University Police staff members are responsible for the protection of students, faculty, staff and guests of Penn State. The staff also is charged with the protection of life, property and maintenance of order on the University Park campus as well as the enforcement of all Pennsylvania laws and University regulations. University Police officers have full law enforcement authority and criminal investigative responsibility for the campus and have the same authority as municipal police officers in the Commonwealth, being authorized to carry firearms and empowered to make arrests.

## Services include:

### Emergency Telephones

To assist with expedient reporting, emergency phones have been installed at various locations around campus. A direct line to University Police is available on the phones located outside most residence halls. Once the phone is activated, it will immediately ring at University Police, the location will be recorded and action will be taken.

## PSUAlert

PSUAlert is an emergency notification service for Penn State students, faculty and staff that allows the University to send text and/or voice messages to your cell phone in the event of an emergency (such as weather-related closings, delays, and other alerts). After you have registered for your Penn State access account, add your cell phone number and other emergency contact information to PSUAlert by visiting <http://psualert.psu.edu/>. All students will automatically receive PSUAlert messages at their Penn State email address.

## Safe Walk Service

The Safe Walk Service 814-865-WALK (9255) is designed to provide walking accompaniment to Penn State students, employees, and visitors who may feel unsafe walking alone on campus at night. Mobile escorts are generally limited to a one-mile radius of central campus.

## Where can I find the University Police Department?

University Police is located in Eisenhower Parking Deck.

## Should I call 911 or 3-1111 in an emergency?

By calling 911 or 3-1111 students can summon police, fire, and/or EMS assistance to the location.

## What if I have questions about safety on campus? Can I call anytime?

University Police can be reached at 814-863-1111 (emergency) and 814-865-1864 (business) 24 hours a day, 365 days a year.

## What resources are available through University Police for victims of crime?

University Police has a Victim Resource Officer who specializes in assisting victims of crime finding the programs and services that are available here at Penn State. Contact the Victim Resource Officer at 814-863-0823.

## Penn State Golf Courses

*Home of the Nittany Lions—  
and One of America's "Top 100 Golf Shops"*

Situated deep in the rolling terrain of Central PA, a world of exhilarating golf awaits you! Personalized service, great course conditions, and excellent amenities make the Penn State Golf Courses the place to be for a complete, professional golf experience. Open to the public.

(814) 865-GOLF • [www.pennstategolfcourses.com](http://www.pennstategolfcourses.com)



# Student Rights, Responsibilities & Resources

## Office of Student Conduct [studentaffairs.psu.edu/conduct](http://studentaffairs.psu.edu/conduct)

120 Boucke Building  
814-863-0342

The Office of Student Conduct is dedicated to supporting students by maintaining a system that is just, equitable, effective, educational and expeditious; a system that promotes student growth through individual responsibility; and a system in which the success of its educational endeavors is characterized by increased civility. Programs and services help students become responsible and contributing citizens within Penn State and the local communities. Incoming students should visit our website and click on the “Know the Code” icon to learn more about what is expected of them as members of the Penn State Community.

## Code of conduct

The Code of Conduct outlines seventeen behaviors that students need to avoid as they are inconsistent with the essential values of Penn State. The Office of Student Conduct is responsible for interpreting and enforcing the Student Code of Conduct, ultimately determining whether or not a student has violated that code. The goal is to support the University's educational mission by promoting a safe, orderly, and positive University climate through enforcing behavioral standards, managing disciplinary proceedings, mentoring students, developing leadership skills, and fostering peer education. The Code of Conduct fosters a University culture that is self-disciplined, where civility is embraced, and the norms and foundational beliefs validate the essential values of Penn State, which are:

- Personal and academic integrity
- Respect for the dignity of all persons and a willingness to learn from the differences in people, ideas, and opinions
- Respect for the rights, property, and safety of others
- Concern for others and their feelings and their need for conditions that support an environment where they can work, grow, and succeed at Penn State

In addition to the Code of Conduct and the University's discipline process, students are also held accountable to local, state, and federal laws through traditional criminal procedures. Any off-campus student behavior that violates the Code of Conduct is subject to disciplinary action following standard University procedures.

## Off-Campus Misconduct Policy [www.studentaffairs.psu.edu/ conduct/policies/offcampus.shtml](http://www.studentaffairs.psu.edu/conduct/policies/offcampus.shtml)

Penn State expects students to conduct themselves in accordance with the law. Student behavior off the premises of the campus that may have violated any local, state, or federal law, or yields a complaint from others alleging law violations or student misconduct will be reviewed by the University.

## Academic Integrity [advising.psu.edu/integrit.html](http://advising.psu.edu/integrit.html)

Academic integrity is a basic guiding principle for all academic activity at Penn State, and all members of the University community are expected to act in accordance with this principle. Academic dishonesty includes, but is not limited to, cheating, plagiarism, fabrication of information or citations, facilitation of acts of academic dishonesty by others, unauthorized possession of examinations, submitting work of another person or work previously used without informing the instructor, and tampering with the academic work of other students.

The University takes violations of Academic Integrity seriously. When an act of academic dishonesty is believed to have occurred, the process begins with a conversation between the faculty member and the accused student and follows the procedures outlined by the Faculty Senate.

## Alcohol Use Penn State University Alcohol Policy [www.studentaffairs.psu.edu/ conduct/policies/alcohol.shtml](http://www.studentaffairs.psu.edu/conduct/policies/alcohol.shtml)

Illegal alcohol use or alcohol abuse on or off the premises of the University negatively affects the University community and places students at personal and academic risk. University rules and procedures regarding student alcohol violations are specifically established to provide: therapeutic or medical support interventions for students, community expectations for student conduct behaviors, and an orderly and safe environment for community members.

All students found responsible for behavior on or off campus involving Prohibited Underage Possession or Use of Alcoholic Beverages, Excessive Consumption of Alcohol, or Driving Under the Influence will be required to complete a University alcohol education/intervention program. At University Park, the Brief Alcohol Screening and

Intervention for College Students (BASICS) program is administered by University Health Services and constitutes the mandatory sanction for first-time alcohol violations in these categories.

## Alcohol Laws in Pennsylvania – A Summary Underage Drinking

It is illegal for anyone under 21 years of age to attempt to purchase, consume, possess, or knowingly and intentionally transport any liquor, malt or brewed beverage. By law, the State College Police Department and University Police are required to notify parents or guardians of all underage drinking violations.

## Carrying False I.D.

It is illegal for anyone under 21 to possess an identification card falsely identifying that person by name, age, date of birth, or photograph as being 21 or older.

## Public Drunkenness

It is illegal to appear in any public place under the influence of alcohol to the degree that you may endanger yourself or other persons or property, or annoy others in your vicinity.

## Driving Under the Influence (DUI)

It is illegal for anyone under 21 to drive a vehicle with a blood alcohol content of .02 or higher, and it is illegal for those 21 or older to drive with a blood alcohol content of .08 or higher.

## State College, PA Ordinances Open Container Ordinance

It is illegal to have an open container of alcohol in any public parking lot or public parking garage, public street, public sidewalk, public alley, or public park in State College.

## Public Urination and Defecation Ordinance

It is illegal to urinate or defecate in/on a public place, private property where the public is admitted, or private property without consent of the owner. It is illegal to urinate or defecate in any public place other than in an appropriate sanitary facility or fail to clean, remove, or dispose of it properly.

# Student Rights, Responsibilities & Resources

## Penn State's Alcohol and Illegal Substances Policy in the Residence Halls

[www.hfs.psu.edu/housing/housing-contracts/terms-and-conditions](http://www.hfs.psu.edu/housing/housing-contracts/terms-and-conditions)

The complete residence hall policy about alcohol can be found at the website listed above. Students who violate this policy will be referred to the Office of Residence Life, the Office of Student Conduct, and/or University Police. In addition to following State and local laws, it is important to remember:

- The possession or use of alcoholic beverages is prohibited in all Penn State on-campus undergraduate residence hall buildings including Nittany Apartments and Eastview Terrace.
- It is against residence hall policy for there to be any tailgating activities in the residential quad areas or residence hall parking lots during any football games or other events.
- Residents will be held responsible for activities that occur in their rooms.

## Alcohol Poisoning is a Medical Emergency Call for help. You could save someone's life.

### Know the signs:

- Passed out or difficult to wake
- Cold, clammy, pale, or bluish skin
- Slowed breathing
- Vomiting while asleep or awake

### Know how to help:

- Turn a vomiting person on his or her side to prevent choking
- Clear vomit from the mouth
- Keep the person awake
- NEVER leave the person unattended

### Plan ahead:

- Eat a full meal before going out
- Determine your limit in advance
- Drink a glass of water after every alcoholic drink
- Avoid drinking games
- Never drink and drive

Information provided by University Health Services, Health Promotions and Wellness [promotinghealth@sa.psu.edu](mailto:promotinghealth@sa.psu.edu).

SINCE 1977  
the apartment store.®

*GRADuate to better living!*



(814) 234-6860

444 E. College Avenue  
State College, Pennsylvania  
[www.apartmentstore.com](http://www.apartmentstore.com)

*Affordable* PRICES  
*Quiet* COMMUNITIES  
*Comfortable* HOMES  
*Just what you* NEED to SUCCEED





## TAKE THE LEAD

Pennsylvania law provides immunity for an underage person who seeks help for a friend who has alcohol poisoning. When a person under 21 years old calls 911 to get help for a peer who needs immediate medical attention due to excessive alcohol consumption, the caller will not be charged with underage consumption or possession.

Penn State's responsible action protocol: Students who contact the appropriate authorities (e.g., call 911, alert a Resident Assistant, contact the police) to help a peer suffering from alcohol poisoning or related problems will not face University judicial action for their own alcohol violations, unless they are responsible for other violations, such as vandalism or assault. These students will be required to complete an alcohol education program, but the fee will be waived.

## WHAT IS TITLE IX?

Title IX is a portion of the Educational Amendments of 1972 that prohibits discrimination on the basis of sex in any program or activity including, but not limited to the following:

- Educational programs or activities including student services, academic counseling, discipline, classroom assignment, grading, athletics, recreation, and study abroad
- Admission and recruitment, including financial aid and housing
- Medical services, including psychological counseling

Violations of Title IX may include, but are not limited to:

- Sexual Harassment (unwelcome sexual advances, requests for sexual favors, and other verbal or physical conduct of a sexual nature)
- Sexual Misconduct (rape, sexual assault, sexual battery, sexual exploitation, and other forms of non-consensual sexual activity)
- Stalking (repeatedly following, harassing, threatening, or intimidating including by telephone, mail, electronic communication, or social media)
- Dating Violence (including emotional, verbal, and economic abuse without the presence of physical abuse)
- Domestic Violence (including emotional, verbal, and economic abuse without the presence of physical abuse)
- Retaliation (adverse employment, academic, or other actions against anyone reporting or participating in an investigation of Title IX allegations)

## Addressing Complaints:

Concerns about conduct by a student or student group that may violate this policy may be reported to:

Danny Shaha, Senior Director, Office of Student Conduct and Deputy Title IX Coordinator  
120 Boucke Building, University Park, PA 16802  
Phone: (814) 863-0342  
Email: [jds49@psu.edu](mailto:jds49@psu.edu)

Concerns about conduct by an employee or third-party that may violate this policy, should be reported to the Affirmative Action Office / Title IX Coordinator at:

Dr. Kenneth Lehrman III, Vice Provost for Affirmative Action and Title IX Coordinator  
328 Boucke Building, University Park, PA 16802  
Phone: (814) 863-0471  
Email: [kfl2@psu.edu](mailto:kfl2@psu.edu)

Concerns about conduct by a student or student group may also be reported to the Title IX Coordinator in addition to or in lieu of contacting the Deputy Title IX Coordinator.

More information: Policy AD-85 (<http://guru.psu.edu/policies/AD85.html>), the SHARE/Title IX website (<http://title-ix.psu.edu/>), the Office of Student Conduct Code of Conduct and Procedures website (<http://studentaffairs.psu.edu/conduct/Procedures.shtml>) and the Affirmative Action website (<http://www.psu.edu/dept/aaoffice/>).

## Report Bias

Penn State is a community of mutual respect and acceptance. If you experience an act of hate or bias, REPORT IT. 814-863-2020 or [www.equity.psu.edu/reportbias](http://www.equity.psu.edu/reportbias)

# 15% Off

**FREE**  
&  
easy  
enrollment.



## COUNTRY

INN & SUITES

BY CARLSON®

- Any Day**
- Any Event**
- Any Room**
- Any Time**

- \*No Blackout Dates
- \*Football Weekends / Anytime
- \*Available on Special Events
- \*No Restrictions



1357 E. College Ave.,  
State College, PA 16801  
(814) 234.6000

the area's largest **FREE** Hot Breakfast!

Sign up now by going to: [www.countryinns.com/psu2018](http://www.countryinns.com/psu2018)

Membership is limited

# Catholic Welcome.



**Learn more about us, our students,  
and our clubs and activities at [psucatholic.org](http://psucatholic.org)**

Newman Club • Mission Mexico • Project Haiti • Bread of Life  
Holiday / Break Schedules • Special Masses  
Spanish Liturgies • Korean Liturgies • Byzantine Liturgies

### ACADEMIC YEAR SCHEDULE

<b>SAT</b>		4p <sup>MASS</sup> <sub>WH</sub>	
<b>SUN</b>	9:30a <sup>MASS</sup> <sub>WH</sub>	11:30a <sup>MASS</sup> <sub>WH</sub>	9p <sup>MASS</sup> <sub>WH</sub>
<b>MON</b>	9:15a		5:05p
<b>TUE</b>	9:15a		5:05p
<b>WED</b>	9:15a <sup>MASS</sup> <sub>HFC</sub>	4-5p	5:05p <sup>MASS</sup> <sub>EC</sub>
<b>THU</b>	9:15a	4-5p <sup>CONFESIONS</sup> <sub>MC</sub>	5:05p
<b>FRI</b>	9:15a <sup>MASS</sup> <sub>MC</sub>	All Day <sup>ADORATION</sup> <sub>MC</sub>	5:15p <sup>BENEDICTION / COMMUNION</sup> <sub>MC</sub>



**HFC** HOLY FAMILY CHAPEL  
PATERNO CATHOLIC CENTER



**EC** EISENHOWER CHAPEL  
**MC** MEDITATION CHAPEL  
**WH** WORSHIP HALL  
PASQUERILLA SPIRITUAL CENTER

- [psucatholic.org](http://psucatholic.org)
- [catholic@psu.edu](mailto:catholic@psu.edu)
- 814.865.4281
- 205C Pasquerilla Spiritual Center
- @psucatholic
- psucatholic



# Resources





# Getting Around

## On Foot

University Park campus is a large place, and you'll probably have classes spread across campus. Even with the fifteen-minute period between classes, you may find yourself rushing to get from one end of campus to the other. See the campus map on page 42-43 of *Preface*, or visit [geog.psu.edu/print-campus-maps](http://geog.psu.edu/print-campus-maps).

## Buses: On & Off Campus

### [www.catabus.com](http://www.catabus.com)

The Centre Area Transportation Authority (CATA) provides a number of bus services for those traveling to and through the University Park Campus. Frequent fare-free Downtown/Campus service is provided by the BLUE and WHITE LOOPS and cross-campus service (via Curtain Road) is provided by the RED and GREEN LINKS. Service is provided on these routes to practically all points on campus and nearby Downtown State College.

Service to campus from the surrounding area is provided by CATA's twenty-three additional CATABUS routes. These routes connect the campus with outlying communities like Boalsburg, Bellefonte, Pleasant Gap, etc. and with major shopping centers and businesses. Please visit [www.catabus.com](http://www.catabus.com) or refer to a current Ride Guide for route, schedule, and fare information.

Real-time bus information can be found at [realtime.catabus.com](http://realtime.catabus.com). iPhone and Android apps are also available (search CATA on your device).

## Bicycles

### [www.parking.psu.edu](http://www.parking.psu.edu)

Bicycles provide good transportation, but security is important to guard against theft. Bikes must be registered, and you may register them online at 24 hours a day, seven days a week. Registration is free. Bikes are also registered at bike shops in town and at the State College Borough Police Department. A single registration covers you both in town and on campus. Bike racks and a few rental lockers are available near the residence hall buildings.



## Your Own Car

### [www.parking.psu.edu](http://www.parking.psu.edu)

Parking is very limited on campus and in the State College area. Because of this, we strongly discourage students from bringing a vehicle to campus. Only students who have completed at least 28 approved credits are eligible for resident or long-term storage parking on campus. If you have to bring a car to campus, you must register it with the University Parking Office. There are several restrictions regarding vehicle registration; details and eligibility are available online at [www.parking.psu.edu](http://www.parking.psu.edu).

## Leaving Town

### Ride Share

### [www.parking.psu.edu/transportation/parking/students/student-rideshare.cfm](http://www.parking.psu.edu/transportation/parking/students/student-rideshare.cfm)

Ride Share is a free ride-matching program that helps students find easy and economical ways to get to and from their destination via car and vanpools.

## Buses

### [www.greyhound.com](http://www.greyhound.com)

### <http://tickets.fullingtontours.com/> <https://us.megabus.com/>

State College offers a variety of travel options available to students wishing to take a weekend trip outside of State College or return to home. Companies such as Greyhound, Fullington Trailways, and Megabus provide service from State College to cities including Philadelphia, Pittsburgh, New York City, Baltimore, and Washington DC. Greyhound and Fullington Trailways pick-up

and drop-off at the bus station located close to campus on Atherton Street, across from the Walker Building. Megabus has a stop in the parking lot of the Walmart Shopping Center on North Atherton Street, approximately 2.5 miles from campus. Seats fill fast during peak travel times; such as Fridays, holidays, and semester breaks, so reservations are recommended. Rates vary, so compare. You can reach Greyhound at 814-238-7971, Fullington Trailways at 814-238-1100, and Megabus at [megabus.com](http://megabus.com).

## University Park Airport

### [www.universityparkairport.com](http://www.universityparkairport.com)

The University Park Airport (SCE) is located approximately six miles north of the University Park campus. Commercial air service to and from the State College area is provided by US Airways Express (800-428-4322) with daily non-stop service to Philadelphia International Airport; United Express (800-241-6522) with daily non-stop service to the Dulles International Airport at Washington, DC and Chicago O'Hare International Airport; Delta (800-225-2525) flies daily non-stop service to Detroit Metro Airport. Connecting flights are available from these four major hubs.

## Trains

Train travel isn't very convenient from State College. The nearest stations are at least 30 minutes away in Lewistown, Tyrone, Huntingdon, and Altoona.



# News & Media

## The Daily Collegian [www.collegian.psu.edu](http://www.collegian.psu.edu)

Published each weekday during the semester, this student-run newspaper is a source of world and local news, sports information, student editorial opinion, and special-interest stories. The Daily Collegian also produces P.S., a Thursday insert dedicated to entertainment and student life. Breaking news stories and special promotions can also be accessed online, via the website or through their new mobile app. Students can directly connect with The Daily Collegian on Twitter (@DailyCollegian) and Facebook. The Daily Collegian is available at many University Park campus locations, including the HUB.

## News for Students

For up-to-date information, visit Penn State's official news sources at [www.news.psu.edu](http://www.news.psu.edu) and sign up to receive email news at [www.newswire.psu.edu](http://www.newswire.psu.edu) to receive emails with important information for Penn State students.

## Event Calendars

[www.events.psu.edu](http://www.events.psu.edu)

This useful website provides date, time, and location information about university events. Events can be sorted by campus, college, and event type including academic, diversity, athletic events, entertainment, and lectures.

## Newspaper Readership Program

[www.newspapers.psu.edu](http://www.newspapers.psu.edu)

The Penn State Student Newspaper Readership Program provides daily newspapers to students. The program provides The New York Times, USA TODAY, and the Centre Daily Times. The content of these papers provides students with international, national, and local news that supports Penn State's general education goals and adds value to the education of students. Daily newspapers are available at vending machines throughout the campus at no additional charge with your Penn State id+ card.

## Connect with Penn State

[socialmedia.psu.edu](http://socialmedia.psu.edu)



Facebook: Penn State  
Twitter: Penn\_State  
You Tube: PennState  
Pinterest: wearepennstate  
Instagram: pennstateuniversity

■ ■ ■ ■ ■ **S** SEPTEMBER 20TH - 27TH  
**PENN STATE** WEEK  
**HOMECOMING** 2014  
■ ■ ■ ■

CAIRNIVAL HOMECOMING  
ICE CREAM CONCERT  
SOCIAL PAIR AIDIE  
TALENT SHOW COMPETITION  
TAILGATE  
COLOR IRUN  
( SEP 14TH )  
more info at  
[www.homecoming.psu.edu](http://www.homecoming.psu.edu)

# Welcome to the State College Area

For some students State College is a small town and for others it is quite large. Many who call this place home think State College is the perfect size. On and off-campus, the State College Area offers a wide range of activities including the arts, sporting events, and a thriving downtown business district. State College is nestled in a valley with abundant natural resources, providing ample opportunities to bike, hike, and enjoy the great outdoors.

State College is proud of being known as a safe and welcoming place. Students comprise a large percentage of the community, and Penn State graduates frequently stay and build their lives here. The knowledge students gain through their studies at Penn State contributes to keeping State College a vibrant and innovative community. State College Borough and its government benefit from student involvement in local non-profits and Penn State organizations to respond to current needs and improve the quality of life in State College.

I invite you to be involved, get to know your neighbors, and to feel at home. I also encourage you to volunteer in the community and build upon the connections that bring us together. Your questions and comments are always welcome, and I personally hold office hours at the HUB-Robeson Center each week during the academic year to make it easy for you share your thoughts and ideas.

**Elizabeth Goreham**  
Mayor, State College



**State College Area  
& Centre County**  
[visitpennstate.org](http://visitpennstate.org)

**Centre County, Pennsylvania**  
[centrecountypa.gov](http://centrecountypa.gov)

**Government:** County seat is located in Bellefonte

**Geography:** 1,000+ square miles located in central Pennsylvania, created on February 13, 1800

**Distance to:**

- Pittsburgh, PA 140 miles; 2 hours 45 mins.
- Baltimore, MD 175 miles; 3 hours 10 mins.
- Philadelphia, PA 195 miles; 3 hours 30 mins.
- Washington, DC 215 miles; 4 hours
- New York, NY 235 miles; 4 hours

**Population:** 155,171

**Education:** 40% of persons age 25+ have a bachelor's degree or higher

**State College Area**

The State College Area consists of the State College Borough and College, Ferguson, Halfmoon, Harris, and Patton townships. Most students living off campus live in the State College Area, with most of those students in the State College Borough. [statecollegepa.us](http://statecollegepa.us)

**Geography:** State College Borough is located in Centre County, PA

**Population:** 42,034, 75% of Borough residents are students.

**Education:** 63% have a bachelor's degree or higher.

**Government:** State College has been a Home Rule Municipality since 1973.





**Always a  
priceless  
experience.**

**HUB-ROBESON GALLERIES**

Penn State, University Park, PA  
[studentaffairs.psu.edu/hub/artgalleries](http://studentaffairs.psu.edu/hub/artgalleries)

Facebook: /HUBRobesonGalleries    Twitter: @HR\_Galleries

**Get 15% OFF each time you visit your student**

That's right...Come stay with our Lion Country Lodging family until your student graduates and receive a 15% discount on your stay each time you visit.

It's simple. Go to [lioncountrylodging.com](http://lioncountrylodging.com), click on the "Parent Discount Plan" circle on the right at the bottom and sign up to register. We will send your Parent Discount Card to you to receive the 15% discount at any of our member hotels seen below.

We can't control the cost of tuition, but we can make it more affordable for you to visit.



**Days Inn**  
DAYS INN PENN STATE

240 S. Pugh Street  
814-238-8454

S. Atherton St. & Branch Rd.  
814-237-8005

**Hilton Garden Inn**  
State College

1221 E. College Avenue  
814-272-1221

**QUALITY INN**

1274 N. Atherton Street  
814-234-1600

**CARNEGIE INN & SPA**  
FINE DINING

Toftrees Ave. / Crickiewood Dr.  
814-234-2424

**NITTANY BUDGET MOTEL**

W. College Ave. at Cato Park  
814-238-0015



# Important Contacts (814 area code)

## Resources

Change-of-Campus & Transfer Students	orientation.psu.edu	865-4178
HUB Information Desk		865-2000
Penn State Parents Program	www.parents.psu.edu	863-1313
Report Bias		863-2020
Student Orientation & Transition Programs	orientation.psu.edu	865-4178
Undergraduate Admissions	admissions.psu.edu	865-5471

## Financial Information

Bursar	www.bursar.psu.edu	865-6528
Student Aid	studentaid.psu.edu	865-6301
id+ Office	idcard.psu.edu	865-7590

## Academic Resources

Disability Services	www.equity.psu.edu/ods	863-1807
Division of Undergraduate Studies	dus.psu.edu	865-7576
Global Programs	www.global.psu.edu	865-7681
Multicultural Resource Center	www.equity.psu.edu/mrc	865-1773
Penn State Learning	www.pennstatelearning.psu.edu	865-1841
Penn State Bookstore	www.psu.bncollege.com	863-0205
Registrar	www.registrar.psu.edu	865-6357
Residential Computing (ResCom)	www.rescom.psu.edu	
Technology Services	www.click.it.psu.edu	863-1035
University Libraries	www.libraries.psu.edu	865-6368
Veterans Programs	www.equity.psu.edu/veterans	863-0465

## Health & Safety

24 Hour Crisis: CAN HELP Line		800-643-5432
Counseling and Psychological Services	studentaffairs.psu.edu/	863-0395
Emergency—Ambulance, Fire, Police		911 or 3-1111
Police Services (non-emergency)	www.police.psu.edu	865-1864
Safe Walk Service	www.police.psu.edu/up-police/services	865-9255 (WALK)
Student Insurance Office	studentaffairs.psu.edu/health/services/insurance/	865-7467
State College Police Department	http://www.statecollegepa.us/	234-7150
University Health Services (UHS)	studentaffairs.psu.edu/health	865-6556
Appointments		863-0774
24/7 Advice Nurse		863-4463

## Campus Life

Campus Meal Plans	foodservices.psu.edu	865-7501
Clubs & Organizations	clubs.psu.edu	863-4624
Adult Learner Programs	studentaffairs.psu.edu/adults	863-7378
Career Services	studentaffairs.psu.edu/career	865-2377
Center for Spiritual & Ethical Development	studentaffairs.psu.edu/spiritual	865-6548
Center for Women Students	studentaffairs.psu.edu/womenscenter	863-2027
Fraternity & Sorority Life	studentaffairs.psu.edu/hub/greeks	863-8065
Housing & Food Services	www.hfs.psu.edu	863-5700
HUB Dining & Restaurants	hubdining.psu.edu	865-7623
LGBTQ Student Resource Center	studentaffairs.psu.edu/lgbta	863-1248
Off-Campus Living	studentaffairs.psu.edu/offcampus	865-2346
Paul Robeson Cultural Center	studentaffairs.psu.edu/cultural	865-3776
Residence Life	studentaffairs.psu.edu/reslife	863-1710
Student Activities	studentaffairs.psu.edu/hub/studentactivities	863-4624
Student and Family Services	studentaffairs.psu.edu/familyservices	863-4926
Crisis Line		863-2020
Student Conduct	studentaffairs.psu.edu/conduct	863-0342
Student Legal Services	studentaffairs.psu.edu/legalservices	867-4388
Union and Student Activities	studentaffairs.psu.edu/hub	863-9755

## Entertainment & Recreation

Athletic Ticket Office	gopsusports.com	1-800-NITTANY/863-1000
Bryce Jordan Center	www.bjc.psu.edu	865-5555
Center for the Performing Arts	cpa.psu.edu	863-0255
Events Calendar	events.psu.edu	

## Transportation

University Park Airport	universityparkairport.com/	865-5511
Bicycle Registration	www.transportation.psu.edu	865-1436
CATA Bus Service	www.catabus.com	238-2282
Parking Office	www.transportation.psu.edu	865-1436



# Welcome to Penn State.

You're going to **love** it...

*Ski & Snowboard  
for credit!*

**Kinesiology  
II, IIA & IZ**



Just not **all** of it.

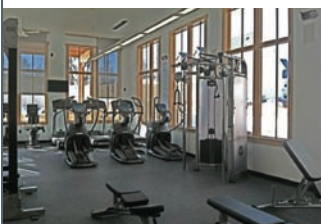
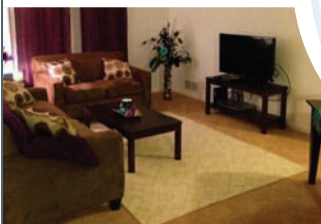
**Tussey  
Mountain**

814-466-6226

[www.tusseymountain.com](http://www.tusseymountain.com)



## THE HEIGHTS at state college



**Work Hard...  
Play Hard...  
Live Easy at  
the Heights!**

Now Leasing 2, 3 & 4  
bedrooms for Fall 2015...  
**Hurry in!**

*You get more at  
The Heights!*

- Gigantic Clubhouse with fitness center, study lounge, gameroom, tanning facility and heated pool
- CATA Bus Passes included for every resident
- Ample parking for residents and guests
- No Security Deposit
- Individual Rent Responsibility
- Friendly 24-hour maintenance personnel
- All less than 1.5 miles to campus

Visit us at 436 E. College Avenue or  
201 Northwick Blvd today.

[HeightsatStateCollege.com](http://HeightsatStateCollege.com) • (814) 861-7100



# UNIVERSITY PARK

## Campus Guide

### 2014-15

- 103 103 Building, The (Inset Map)
- 230 230 Building, The (Inset Map)
- 300 300 Building, The H3
- 328 328 Building, The (Inset Map)
- 329 329 Building, The (Inset Map)
- 330 330 Building, The (Inset Map)
- ACA Academic Activities G8
- ACP Academic Projects G8
- AAD Agricultural Administration E6
- AGR Agricultural Arena C12
- AGE Agricultural Engineering E5
- ASI Agricultural Science & Industries E6
- ASM All-Sports Museum D10
- ARC Almquist Research Center B11
- ALT Althouse Lab F5
- ARL Applied Research Lab (ARL) H2
- ASB Applied Science G1
- ARB Arboretum C6
- ARM Armsby F5
- APD Arthropod Research Building A12
- ACG Arts Cottage F5
- BCS Bank of America Career Services F7
- BRD Beard Field (Nittany Lion Softball Park) D8
- BVR Beaver Stadium D10
- BDK Beecher-Dock House H8
- BND Benedict House H8
- BFC Bennett Family Center G8
- BCR Berkey Creamery E6
- BBH Biobehavioral Health H5
- BTL Biomechanics Teaching Lab E3
- BLB Blue Band B8
- BKS Bookstore G5
- BRL Borland E5
- BKE Boucke F5
- BNR Breazeale Nuclear Reactor G9
- BJC Bryce Jordan Center E9
- BKH Buckhout Lab F5
- BUR Burrowes F4
- BST Bus Station G2
- BUS Business D6
- BUT Butler (Ag Engineering) B11
- BFM Butler Farm B7
- CSQ Calder Square II H4
- CRG Carnegie G4
- CRP Carpenter E3
- CDR CEDAR E4
- CFS Center for Sustainability F12
- CBL Centralized Biological Lab H11
- CMT Central Milk Testing Lab A12
- CPV Centre County—Penn State Visitors Center C12
- CHB Chambers E3
- CHN Chandlee Lab G4
- CEL Chemical Ecology Lab A12
- CHM Chemistry F5
- CUL Coal Utilization Lab G8
- CMP Computer Building E7
- CRN Corn Breeding Lab B11
- DCX Dairy Complex A9
- DVL Davey Lab F5
- DBG Daybridge Child Dev. Center (Inset Map)
- DKE Deike G3
- EES Earth-Engineering Sciences G1
- ELR East Area Locker Room F8
- EAP East Parking Deck E6
- EIS Eisenhower Auditorium F6
- ECH Eisenhower Chapel E4
- EPD Eisenhower Parking Deck F6
- EEE Electrical Engineering East G3
- EEW Electrical Engineering West G3
- ELT Elliott H3
- ENG Engineering Services G1
- EUN Engineering Units (A-C) H3
- EXE Executive Education E2
- FMD Farms Department B11
- FNK Fenske Lab F5
- FRG Ferguson E5
- FLT Fleet Operations B10
- FDS Food Science E7
- FRD Ford D3
- FRL Forest Resource Lab G9
- FRR Forest Resources D6
- FRM Forum E4
- FRH Fraternity House F3, G3
- FRN Frear North F5
- FRS Frear South F5
- GRD Gardner House H9
- GNS General Stores B10
- GLF Golf Course (White) F1
- GRN Grange G6
- GIP Greenberg (Ice Pavillion) F8
- HWL Hollowell G2
- HMD Hammond H3
- HZM HazMat Building A6
- HI Headhouse I E6
- HI Headhouse II E6
- HI Headhouse III E6

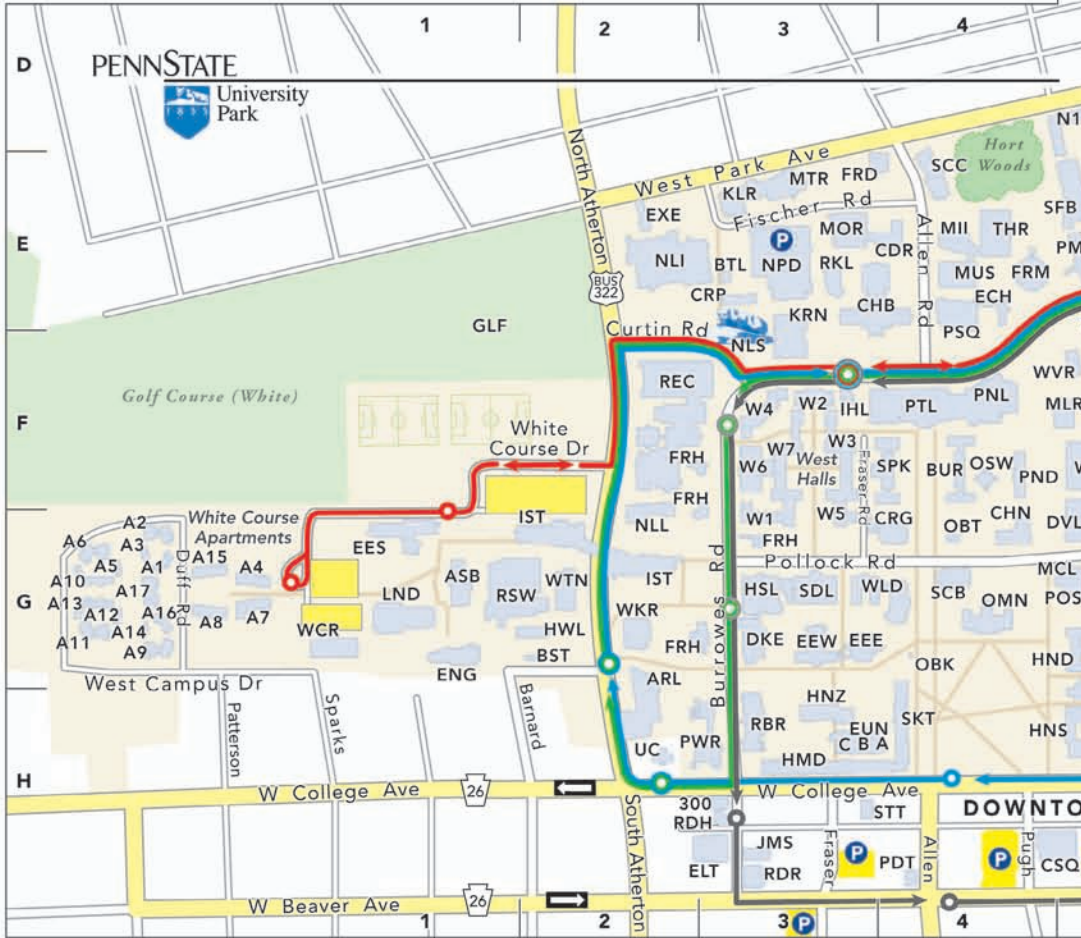
- HHD Health & Human Development H5
- HND Henderson G5
- HNS Henderson South H5
- HNG Henning E6
- HUB Hetzel Union Building (HUB) G5
- HPC High Pressure Combustion Laboratory A7
- HNZ Hintz Family Alumni Center H3
- HLB Holuba Hall F9
- HRS Horse Barn A11
- HSL Hosler G3
- HBS Hostetter (Business Services) B7
- HFS Housing & Food Services B6
- HPD HUB Parking Deck G6
- HLS Huck Life Science F6
- IHL Ihseng F3
- IST Information Sciences & Technology G2
- INS Insectary A12
- IM Intramural D9
- IMF Intramural Fields C8, D8, D9
- JMS James H3
- JFF Jeffrey Field C9
- KTZ Katz C7
- KLR Keller E3
- KRN Kern E3
- LWR Land & Water Research G11
- LFB Lasch Football Building F9
- LDY Laundry B10
- LND Leonhard G1
- LTL Livestock Testing Lab B12
- LBT Lubert (Inset Map)
- MNT Maintenance I (Pollock) G8
- MTR Mateer E3
- MRI Materials Research Institute inset
- MRL Materials Research Lab G10
- MCL McAllister G5
- NAT McCoy Natorium E7
- MTL Meats Lab D11
- MED Medlar Field at Lubrano Park E12
- MRK Merkle A12
- MSC Millennium Science Complex F6
- MOR Moore E3
- MLR Mueller Lab F5

- MIF Multi-Sport Indoor Facility F10
- MRC Mushroom Research Center A7
- MTD Mushroom Test Demo Facility A6
- MUS Music E4
- MII Music II E4
- NLI Nittany Lion Inn E2
- NLS Nittany Lion Shrine E3
- NPD Nittany Parking Deck E3
- NLL Noll Lab F2
- OBK Obelisk G4
- OBT Old Botany G4
- OMN Old Main G4
- OSM Osmond Lab F5
- OSW Oswald Tower F4
- OUT Outreach Innovation inset
- PMA Palmer Museum of Art E5
- PSQ Pasquerilla Spiritual Center E4
- PRL Pasture Research Lab E6
- PNL Paterno Library F4
- PTL Pattee Library F4
- PTN Patterson E5
- PVN Pavilion Theatre E5
- PEG Pegula Ice Arena E9
- PDT Penn State Downtown Theatre Center H4
- PSC Penn Stater Conf. Ctr Hotel (Inset Map)
- OPP Physical Plant C10
- PCG Pine Cottage F5
- PLK Pollock G7
- PND Pond Lab F4
- POS Post Office G5
- PWR Power Plant H3
- PRO Procurement Services B7
- RKL Rackley E3
- RBR Reber H3
- REC Recreation (Rec Hall) F2
- RSC Research Center (A,B,C,D) G10
- RSE Research East G9
- RSW Research West G1
- RDH Rider House H3
- RDR Rider H3
- RTR Ritenour F6
- ROB Robeson Cultural Center G5
- SKT Sackett H4
- SVG Salvage Warehouse B7
- STF Sarni Tennis Facility F7
- SEL Scent Mediated Ecology Laboratory A12
- SHC Schreyer Honors College H6
- SCH Schreyer House B5
- SCC Shultz Child Care Center E4
- SCB Schwab Auditorium G4
- SHD Shields E8
- SPK Sparks F4
- SCG Spruce Cottage F5
- STT State Theatre H3
- SDL Steidle G3

- SFB Stuckeman Family Building E5
- STH Student Health Center F7
- SWM Swimming Pool (outdoor) F7
- TCH Technology Center inset
- TCM Telecommunications F5
- TNS Tennis F8
- THR Theatre E4
- TMS Thomas F6
- TFS Track & Field Stadium F11
- TRN Transportation Research G10
- TRF Turfgrass Museum A8
- TSN Tyson E6
- UC University Club H2
- USI University Support I A7
- USII University Support II A7
- VTC Valentine Turfgrass Res. Cntr. B8
- VIS Visual Arts E5
- WGR Wagner E8
- WKR Walker G2
- WTK Wartik Lab F5
- WTN Water Tunnel (G. Thomas) G2
- WVR Weaver F5
- WCR West Campus Chiller G1
- WHT White G6
- WML Whitmore Lab F5
- WLD Willard G3

- East Residence Halls**
- E1 Bigler Hall E7
  - E2 Brumbaugh Hall D7
  - E3 Curtin Hall E7
  - E4 Findlay Commons D7
  - E5 Fisher Hall D7
  - E6 Geary Hall D7
  - E7 Hastings Hall D8
  - E8 Johnston Commons D7
  - E9 McKean Hall D8
  - E10 Packer Hall D7
  - E11 Pennypacker Hall E8
  - E12 Pinchot Hall D7
  - E13 Snyder Hall D8
  - E14 Sproul Hall D7
  - E15 Stone Hall D8
  - E16 Stuart Hall D7
  - E17 Tener Hall D7

- Eastview Terrace**
- ET1 Brill Hall G8
  - ET2 Curry Hall G8
  - ET3 Harris Hall G8
  - ET4 Miller Hall H8
  - ET5 Nelson Hall H8
  - ET6 Panofsky Hall H8
  - ET7 Young Hall H7





**Nittany Residence Area**  
 Nittany Apartments **F8**  
 Nittany Community Ctr **F7**  
 Nittany Hall **G8**

**North Residence Halls**  
 Beam Hall **D4**  
 Holmes Hall **D5**  
 Leete Hall **D5**  
 Runkle Hall **D5**  
 Warnock Commons **D5**

**Pollock Residence Halls**  
 Beaver Hall **G7**  
 Hartranft Hall **G6**  
 Hiestler Hall **G7**  
 Mifflin Hall **G6**

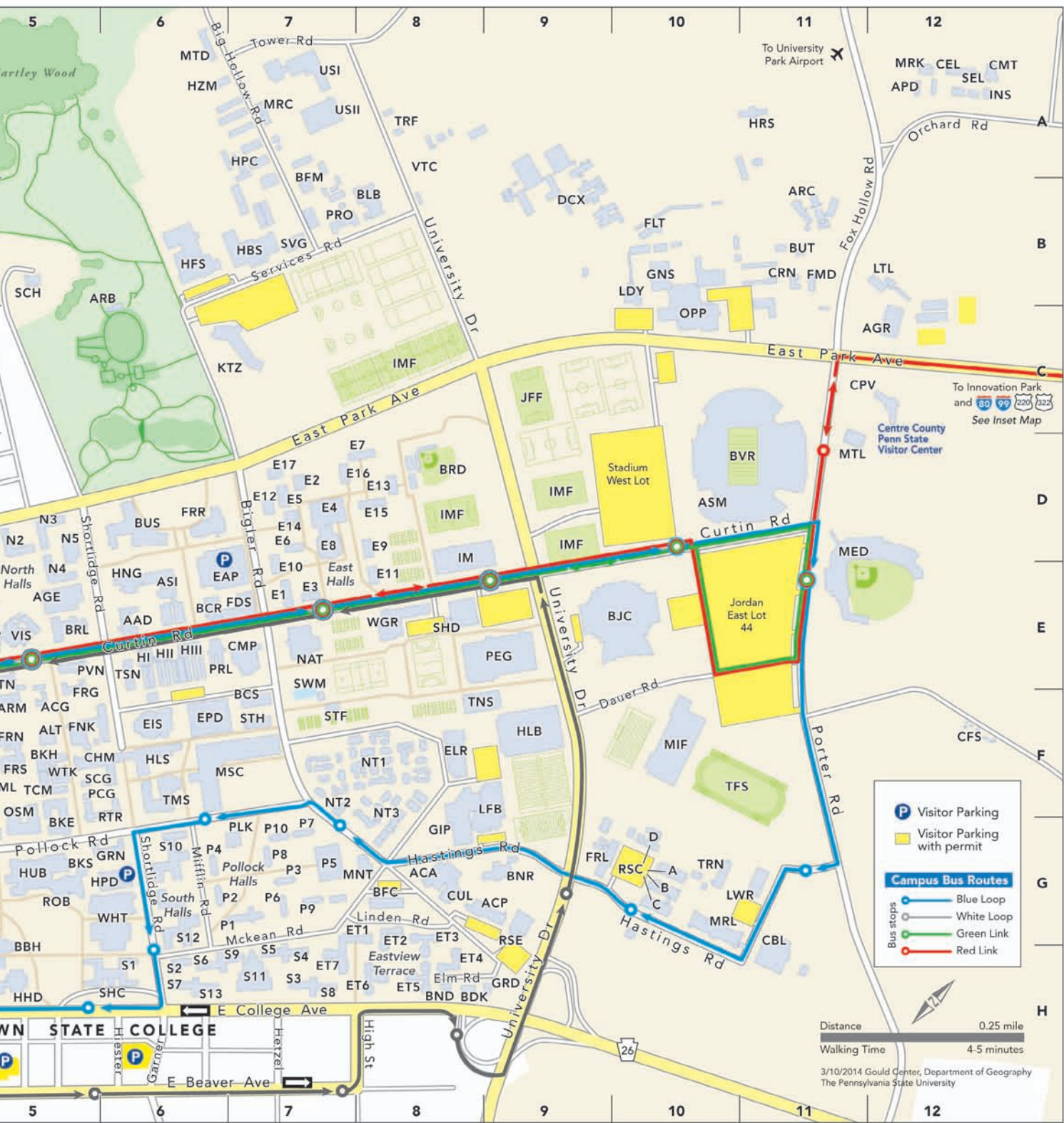
P5 Pollock Commons **G7**  
 P6 Porter Hall **G7**  
 P7 Ritner Hall **G7**  
 P8 Shulze Hall **G7**  
 P9 Shunk Hall **G7**  
 P10 Wolf Hall **G7**

**South Residence Halls**  
 S1 Atherton Hall **G6**  
 S2 Chace Hall **H6**  
 S3 Cooper Hall **H7**  
 S4 Cross Hall **H7**  
 S5 Ewing Hall **H7**  
 S6 Haller Hall **H6**  
 S7 Hibbs Hall **H6**  
 S8 Hoyt Hall **H7**  
 S9 Lyons Hall **H7**  
 S10 McElwain Hall **G6**

S11 Redifer Commons **H7**  
 S12 Simmons Hall **G6**  
 S13 Stephens Hall **H6**

**West Residence Halls**  
 W1 Hamilton Hall **F3**  
 W2 Irvin Hall **F3**  
 W3 Jordan Hall **F3**  
 W4 McKee Hall **F3**  
 W5 Thompson Hall **F3**  
 W6 Waring Commons **F3**  
 W7 Watts Hall **F3**

A5 Farrell Hall **G1**  
 A6 Ferguson Hall **G1**  
 A7 Garban Hall **G1**  
 A8 Grubb Hall **G1**  
 A9 Haffner Hall **G1**  
 A10 Holderman Hall **G1**  
 A11 Ikenberry Hall **G1**  
 A12 Lovejoy Hall **G1**  
 A13 Osborn Hall **G1**  
 A14 Palladino Hall **G1**  
 A15 Patterson Hall **G1**  
 A16 Ray Hall **G1**  
 A17 Weston Community Center **G1**





# we make it easy to Use Your Time Wisely

Whether you're reading in-depth analysis of local issues, catching up on sporting events or planning your weekend, the time you spend reading our weekly newspaper is quality time that enriches your life with knowledge, news, insights and much, much more.



Break Time



Morning Time



Commute Time



Me Time

THE CENTRE COUNTY  
**GAZETTE**

*We cover what's  
important to you!*

In Print & Online

814-238-5051 • [www.centrecountygazette.com](http://www.centrecountygazette.com)



THE **POINTE**

We're not just an apartment...  
**WE'RE A COMMUNITY!**

**SAVE \$349\***

\* Some restrictions apply

when you apply online and use Promo Code **PREFACE**  
to have your application and service fees  
**WAIVED!**

PointeStateCollege.com



814.231.6900 | 501 Vairo Boulevard



**THE VERY BEST IN AUSTRIAN HOME COOKING**  
"Where Bacon is an herb"<sup>SM</sup>

**15% off** orders \$11<sup>50</sup> or more!  
*One coupon per party*

**GREAT PRICES!** Try our homemade Authentic Austrian Pastries including bacon based tortes!

**Unique Dining Experience!**

Mon-Wed 11am-9pm | Thu-Sat 11am-9pm | Home Football Sunday Brunch 11am-4pm  
132 W. College Ave. | 814-272-0738

**MATTRESS WORLD**  
Discount Sleep Center  
*The Mattress Experts*



*Serving PSU students' bedding needs for over 20 years!*

Largest selection of back to school bedding.  
Twin starting at **\$99<sup>95</sup>** ea. pc.

**We will not be undersold!**

**FREE** same day delivery during student move-in. Look for our **big blue canopy.**

**FREE** gift with coupon

*1 per customer*

1500 North Atherton State College, PA 16801  
(Next to Hoss's Steak & Seafood House)  
(814) 234-2222

1356 East College Ave. State College, PA 16801  
(Across from W.R. Hickey Beer Distributor)  
(814) 237-2337

**No matter the season, Town&Gown's sports annuals have you covered and will get you ready to cheer on the Lions!**

Town&Gown's **Penn State**  
2013 Football Annual

**Catching Fire**

Nittany Lion receiver Allen Robinson looks to put more heat on opposing defenses after last year's record-setting breakout season

Town&Gown's **Penn State**  
2013-14 Winter Sports Annual

**MORE TO MAGGIE**

While Maggie Lucas has one more season to rewrite the Lady Lions' history books, the star guard continues to show that she isn't just about basketball

**Hockey:** Enters new home  
**Men's Basketball:** Frazier, Newbill ready to team up  
**Wrestling:** Taylor, Ruth lead quest for a four-peat

**Visit townandgown.com to order your copies!**

**THE VERY BEST IN AUSTRIAN HOME COOKING**  
*"Where Bacon is an herb"*<sup>SM</sup>

**15% off orders \$11<sup>50</sup> or more!**  
*One coupon per party*

**GREAT PRICES!** Try our homemade Authentic Austrian Pastries including bacon based tortes!

**Unique Dining Experience!**

Mon-Wed 11am-8pm | Thu-Sat 11am-9pm | Home Football Sunday Brunch 11am-4pm  
 132 W. College Ave. | 814-272-0738

**THE POINTE** We're not just an apartment...  
**WE'RE A COMMUNITY!**

**SAVE \$349\*** \*Some restrictions apply




when you apply online and use Promo Code **PREFACE** to have your application and service fees **WAIVED!**

PointeStateCollege.com   

814.231.6900 | 501 Vairo Boulevard   



**MATTRESS WORLD**  
 Discount Sleep Center  
*The Mattress Experts*

1500 North Atherton State College, PA 16801  
 (Next to Hoss's Steak & Seafood House)  
 (814) 234-2222

*Serving PSU students' bedding needs for over 20 years!*

Largest selection of back to school bedding.  
 Twin starting at **\$99<sup>95</sup> ea. pc.**

**We will not be undersold!**

**FREE** same day delivery during student move-in. Look for our **big blue canopy.**

**FREE** gift with coupon  
*1 per customer*

1356 East College Ave. State College, PA 16801  
 (Across from W.R. Hickey Beer Distributor)  
 (814) 237-2337

**No matter the season, *Town&Gown's* sports annuals have you covered and will get you ready to cheer on the Lions!**

Town&Gown's  
**Penn State**  
 2013 Football Annual



*Catching Fire*

Nittany Lion receiver Allen Robinson looks to put more heat on opposing defenses after last year's record-setting breakout season

8895  335

Town&Gown's  
**Penn State**  
 2013-14 Winter Sports Annual



**MORE TO MAGGIE**

While Maggie Lucas has one more season to rewrite the Lady Lions' history books, the star guard continues to show that she isn't just about basketball

**Hockey:** Enters new home  
**Men's Basketball:** Frazier, Newbill ready to team up  
**Wrestling:** Taylor, Ruth lead quest for a four-peat

8895  818

**Visit [townandgown.com](http://townandgown.com) to order your copies!**



**Cell Phones**

**Tablets**

**Laptops**

**Game Consoles**

**P2P**  
COMPUTER SOLUTIONS

**We keep you connected!**

214 E College Ave  
State College, PA 16801

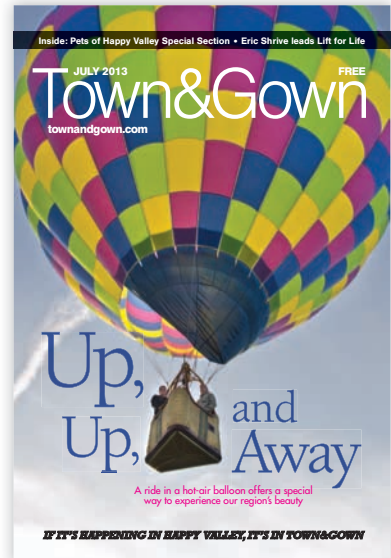
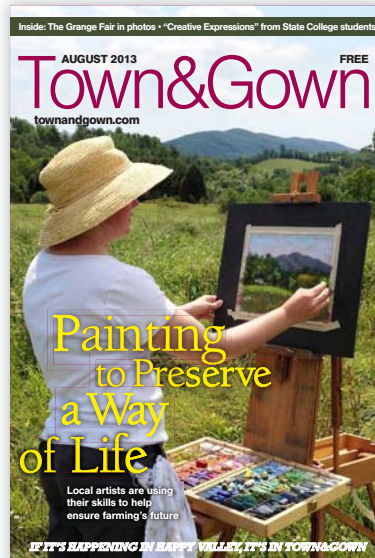
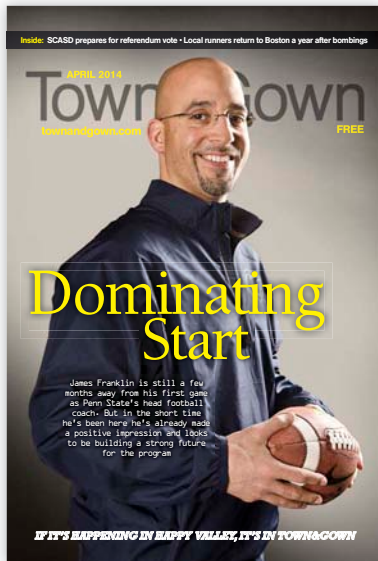
Ph: (814) 308-8404  
www.p2p-pc.com

## Guide to Advertisers

American Campus Communities/The Park.....	3	Penn State Campus Retail Dining.....	24
American Campus Communities/Lions Crossing ..... Inside Back Cover		Penn State Dept of Military Science .....	11
Catholic Campus Ministry .....	34	Penn State Federal Credit Union.....	24
Fullington Bus .....	13	Penn State Golf Courses.....	30
Happy Valley Tours.....	24	Penn State Hillel.....	10
Herwigs.....	45	Penn State Homecoming.....	37
HFL Corporation .....	34	Penn State Hospitality.....	37
Hospitality Asset Management Company.....	39	PMI Property management, inc.....	23
Hub Robeson Galleries.....	39	PNC Bank .....	17
Lions Gate Apartments .....	13	Student Bookstore .....	Back Cover
Lutheran Campus Ministry .....	24	The Apartment Store/Keystone Real Estate .....	31
Mattress World .....	45	The Height at State College.....	41
Meadows Psychiatric Hospital .....	23	The Pointe .....	6, 45
Nittany Hotel Management / Best Western		The Retreat of State College.....	18
University Park Inn & Suites.....	4	Tussey Mountain .....	41
P2P Computer Solutions.....	47	Wal-Mart.....	29
Penn State Bookstore .....	Inside Front Cover		

# Town&GownMAGAZINE

Pick up your **FREE** copy of **Town&Gown** each month to find out what's happening in Happy Valley!



## Available at over 400 locations

Visit [townandgown.com](http://townandgown.com), check out **Town&Gown** on Facebook, and follow on Twitter @TownGownSC.

*If it's happening in Happy Valley, it's in Town&Gown!*





**4 out of 5 anchormen agree, SBS  
has PSU textbooks super cheap!**  
**Save up to 50% when you RENT TEXTBOOKS at SBS!**  
**Tons of USED textbooks in stock**

**SAVE CASH  
ON PSU TEXTBOOKS!**

**RESERVE your FALL TEXTBOOKS.**

Pick them up when you arrive. It's easy!

Go to [www.thestudentbookstore.com](http://www.thestudentbookstore.com)

Take 10%  
OFF One  
Textbook Rental!

**STUDENT  
BOOK  
STORE**

One coupon per customer. Good on one rental. In-store only. Expires 7/31/15. (preface)

[www.thestudentbookstore.com](http://www.thestudentbookstore.com)

**STUDENT  
BOOK  
STORE**

Downtown State College  
330 East College Avenue  
[www.facebook.com/sbpsu](http://www.facebook.com/sbpsu)  
800.373.4SBS

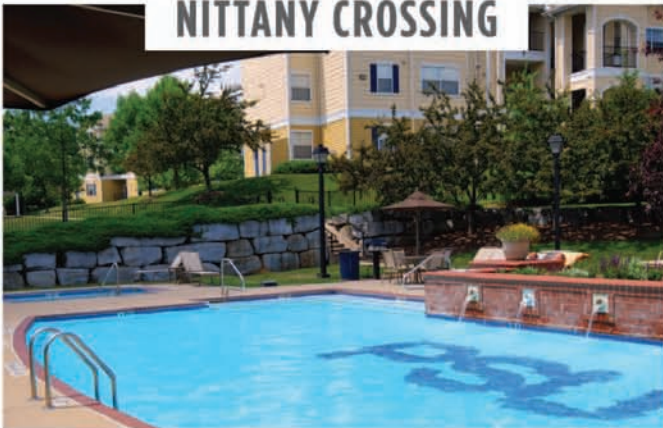


Parent Credit Card Purchase Plan  
Visit our website for more information!

# STATE COLLEGE'S **BEST** STUDENT LIVING

UPGRADED FITNESS CENTER, RECREATION CENTER,  
COMPUTER CENTER & TANNING ROOM

**NITTANY CROSSING**



**LIONS CROSSING**



**+ SAVE \$99 WITH ZERO DEPOSIT**

**APPLY ONLINE TODAY FOR FALL 2014**

**CLOSE TO CAMPUS + RESORT-STYLE AMENITIES + FULLY FURNISHED  
PRIVATE BEDS & BATHS AVAILABLE + CABLE & INTERNET INCLUDED**

**PSUStudentHousing.com**



AN AMERICAN CAMPUS COMMUNITY

Limited time only. See office for details. Fees, amenities & utilities included are subject to change.